



	Page
4.1 Fibre Adaptors	
Multimode LC Quad Adaptor	128
Single Mode LC Quad Adaptor	128
Multimode LC Duplex Adaptor	129
Single Mode LC Duplex Adaptor	129
Multimode SC Duplex Adaptor	130
Single Mode SC Duplex Adaptor	130
Multimode SC Simplex Adaptor	131
Single Mode SC Simplex Adaptor	131
4.2 Fibre Connectors	
Multimode LC Duplex Connector	132
Single Mode LC Duplex Connector	132
Multimode LC Simplex Connector	133
Single Mode LC Simplex Connector	133
Multimode SC Duplex Connector	134
Single Mode SC Duplex Connector	134
Multimode SC Simplex Connector	135
Single Mode SC Simplex Connector	135
4.3 Fibre Pigtails	
LC Pigtails	136
SC Pigtails	136

	Page
4.4 Fibre Fan Outs	
OM4 Multimode 24 Core MTP to LC Fan Out	137
OM3 Multimode 24 Core MTP to LC Fan Out	137
OS1 Single Mode 24 Core MTP to LC Fan Out	138
OM4 Multimode 12 Core MTP to LC Fan Out	138
OM3 Multimode 12 Core MTP to LC Fan Out	139
OS1 Single Mode 12 Core MTP to LC Fan Out	139
Multimode LC to LC Fan Out	140
Single Mode LC to LC Fan Out	140
Multimode SC to SC Fan Out	141
Single Mode SC to SC Fan Out	141
4.5 RapidNet MTP Back-Bone Cables	
OM4 Multimode 24 Core MTP	142
OM3 Multimode 24 Core MTP	142
OS1 Multimode 24 Core MTP	143
OM4 Multimode 12 Core MTP	143
OM3 Multimode 12 Core MTP	144
OS1 Single Mode 12 Core MTP	144
4.6 Fibre Panels	
LC Multimode Panel	145
LC Single Mode Panel	145
SC Multimode Panel	146
SC Single Mode Panel	146



Fibre Adaptors

Multimode LC Quad Adaptor

Features and Benefits

- High performance Multimode Quad Adaptor
- Compatible with fibre panels from HellermannTyton
- A fully populated panel offers up to 96 LC fibres in 1U of space
- Quad Adaptor accepts four LC Connectors

Product Description

The fibre adaptor is used to mate two connectors together, usually mounted in a distribution panel or wall box. In most cases it is the critical part of the system that aligns the ferrule of the connectors keeping the fibres in perfect alignment and minimising losses.



4 port Quad LC Multimode Adaptor, compatible with HellermannTyton Fibre Panels

Technical Data Table

Article-No.	Type	Performance Category	Port count	Colour
855-20041	FBAMMBG-LCLCQD-FL001	Multimode	4	Beige (BGE)

All dimensions in mm. Subject to technical changes.

Technical Description

The LC Adaptor sets the standard for small optical fibre inter-connects. With its simple to use latched lever locking mechanism preventing

accidental disconnection and precision housing for optimum performance.

Fibre Adaptors

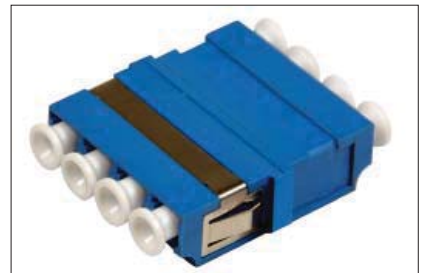
Single Mode LC Quad Adaptor

Features and Benefits

- High performance Single Mode Quad Adaptor
- Compatible with fibre panels from HellermannTyton
- A fully populated panel offers up to 96 LC fibres in 1U of space
- Quad Adaptor accepts four LC Connectors

Product Description

The fibre adaptor is used to mate two connectors together, usually mounted in a distribution panel or wall box. In most cases it is the critical part of the system that aligns the ferrule of the connectors keeping the fibres in perfect alignment and minimising losses.



4 port Quad LC Single Mode Adaptor, compatible with HellermannTyton Fibre Panels

Technical Data Table

Article-No.	Type	Performance Category	Port count	Colour
855-20042	FBASMBL-LCLCQD-FL001	Single Mode	4	Blue (BU)

All dimensions in mm. Subject to technical changes.

Technical Description

The LC Adaptor sets the standard for small optical fibre inter-connects. With its simple to use latched lever locking mechanism preventing

accidental disconnection and precision housing for optimum performance.



Fibre Adaptors

Multimode LC Duplex Adaptor

Features and Benefits

- High performance Multimode Duplex Adaptor
- Compatible with fibre panels from HellermannTyton
- A fully populated panel offers up to 48 LC fibres in 1U of space
- Duplex Adaptor accepts two LC Connectors

Product Description

The fibre adaptor is used to mate two connectors together, usually mounted in a distribution panel or wall box. In most cases it is the critical part of the system that aligns the ferrule of the connectors keeping the fibres in perfect alignment and minimising losses.



LC Multimode Duplex Adaptor

Technical Data Table

Article-No.	Type	Performance Category	Port count	Colour
855-10049	FBAMMBG-LCLCDX-FL001	Multimode	2	Beige (BGE)

All dimensions in mm. Subject to technical changes.

Technical Description

The LC Adaptor sets the standard for small optical fibre inter-connects. With its simple to use latched lever locking mechanism preventing

accidental disconnection and precision housing for optimum performance.

Fibre Adaptors

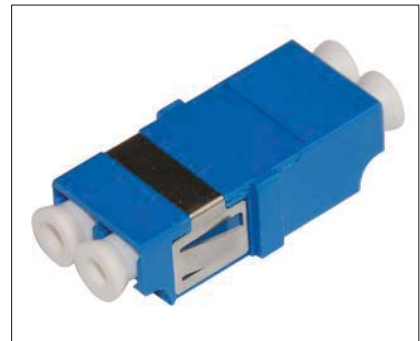
Single Mode LC Duplex Adaptor

Features and Benefits

- High performance Single Mode Duplex Adaptor
- Compatible with fibre panels from HellermannTyton
- A fully populated panel offers up to 48 LC fibres in 1U of space
- Duplex Adaptor accepts two LC Connectors

Product Description

The fibre adaptor is used to mate two connectors together, usually mounted in a distribution panel or wall box. In most cases it is the critical part of the system that aligns the ferrule of the connectors keeping the fibres in perfect alignment and minimising losses.



2 port LC Duplex Single Mode Adaptor, compatible with HellermannTyton Fibre Panels

Technical Data Table

Article-No.	Type	Performance Category	Port count	Colour
855-20055	FBASMBL-LCLCDX-FL001	Single Mode	2	Blue (BU)

All dimensions in mm. Subject to technical changes.

Technical Description

The LC Adaptor sets the standard for small optical fibre inter-connects. With its simple to use latched lever locking mechanism preventing

accidental disconnection and precision housing for optimum performance.



Fibre Adaptors

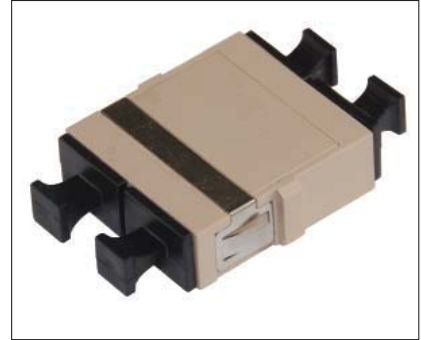
Multimode SC Duplex Adaptor

Features and Benefits

- High performance Multimode Duplex Adaptor
- Compatible with fibre panels from HellermannTyton
- A fully populated panel offers up to 48 SC fibres in 1U of space
- Duplex Adaptor accepts two SC Connectors

Product Description

The fibre adaptor is used to mate two connectors together, usually mounted in a distribution panel or wall box. In most cases it is the critical part of the system that aligns the ferrule of the connectors keeping the fibres in perfect alignment and minimising losses.



2 port SC Duplex Multimode Adaptor, compatible with HellermannTyton Fibre Panels

Technical Data Table

Article-No.	Type	Performance Category	Port count	Colour
855-10055	FBAMMBG-SCSCDX-FL001	Multimode	2	Beige (BGE)

All dimensions in mm. Subject to technical changes.

Technical Description

The SC Adaptor is a proven design used in modern optical fibre systems. With the audible click mechanism and full proof design this connector provides a secure inter-connect.

Fibre Adaptors

Single Mode SC Duplex Adaptor

Features and Benefits

- High performance Single Mode Duplex Adaptor
- Compatible with fibre panels from HellermannTyton
- A fully populated panel offers up to 48 SC fibres in 1U of space
- Duplex Adaptor accepts two SC Connectors

Product Description

The fibre adaptor is used to mate two connectors together, usually mounted in a distribution panel or wall box. In most cases it is the critical part of the system that aligns the ferrule of the connectors keeping the fibres in perfect alignment and minimising losses.



2 port SC Duplex Single Mode Adaptor, compatible with HellermannTyton Fibre Panels

Technical Data Table

Article-No.	Type	Performance Category	Port count	Colour
855-10054	FBASMBL-SCSCDX-FL001	Single Mode	2	Blue (BU)

All dimensions in mm. Subject to technical changes.

Technical Description

The SC Adaptor is a proven design used in modern optical fibre systems. With the audible click mechanism and full proof design this connector provides a secure inter-connect.



Fibre Adaptors

Multimode SC Simplex Adaptor

Features and Benefits

- High performance Multimode Simplex Adaptor
- Compatible with fibre panels from HellermannTyton
- A fully populated panel offers up to 24 SC fibres in 1U of space
- Simplex Adaptor accepts one SC Connector

Product Description

The fibre adaptor is used to mate two connectors together, usually mounted in a distribution panel or wall box. In most cases it is the critical part of the system that aligns the ferrule of the connectors keeping the fibres in perfect alignment and minimising losses.



SC Simplex Multimode Adapter, compatible with HellermannTyton Fibre Panels

Technical Data Table

Article-No.	Type	Performance Category	Port count	Colour
855-20030	FBAMMBG-SCSCSX-FL001	Multimode	1	Beige (BGE)

All dimensions in mm. Subject to technical changes.

Technical Description

The SC Adaptor is a proven design used in modern optical fibre systems. With the audible click mechanism and full proof design this connector provides a secure inter-connect.

Fibre Adaptors

Single Mode SC Simplex Adaptor

Features and Benefits

- High performance Single Mode Simplex Adaptor
- Compatible with fibre panels from HellermannTyton
- A fully populated panel offers up to 24 SC fibres in 1U of space
- Simplex Adaptor accepts one SC Connector

Product Description

The fibre adaptor is used to mate two connectors together, usually mounted in a distribution panel or wall box. In most cases it is the critical part of the system that aligns the ferrule of the connectors keeping the fibres in perfect alignment and minimising losses.



SC Simplex Single Mode Adapter, compatible with HellermannTyton Fibre Panels

Technical Data Table

Article-No.	Type	Performance Category	Port count	Colour
855-20031	FBASMBL-SCSCSX-FL001	Single Mode	1	Blue (BU)

All dimensions in mm. Subject to technical changes.

Technical Description

The SC Adaptor is a proven design and used in modern optical fibre systems. With the audible click mechanism and full proof design this connector provides a secure inter-connect.



Fibre Connectors

Multimode LC Duplex Connector

Features and Benefits

- Features a latched lever mechanism to provide secure mating into the adaptor
- Uses half the space of the SC Connector
- Connectors supplied in separate bags
- Available with 3.0mm boot

Product Description

The LC Connector is now used extensively in the local area network as a standard fitting for many market leading hubs and switches. The LC is the standard for small form factor connectors.



LC Multimode Duplex Connector available with 3.0mm boot

Technical Data Table

Article-No.	Type	Performance Category	Port count	Colour
855-10041	FBCMMBG-LCXXDX-3.0WH	Multimode	2	Beige (BGE)

All dimensions in mm. Subject to technical changes.

Technical Description

Multimode LC Connectors are supplied in individual bags including the connector, dust cover and a 3.0mm boot. All connectors comply with the IEC874-14 standard ensuring interoperability.

Fibre Connectors

Single Mode LC Duplex Connector

Features and Benefits

- Features a latched lever mechanism to provide secure mating into the adaptor
- Uses half the space of the SC Connector
- Connectors supplied in separate bags
- Available with 3.0mm boot

Product Description

The LC Connector is now used extensively in the local area network as a standard fitting for many market leading hubs and switches. The LC is the standard for small form factor connectors.



LC Single Mode Duplex Connector available with 3.0mm boot

Technical Data Table

Article-No.	Type	Performance Category	Port count	Colour
855-10053	FBCSMBL-LCXXDX-3.0WH	Single Mode	2	Blue (BU)

All dimensions in mm. Subject to technical changes.

Technical Description

Single Mode LC Connectors are supplied in individual bags including the connector, dust cover and a 3.0mm boot. All connectors comply with the IEC874-14 standard ensuring interoperability.



Fibre Connectors

Multimode LC Simplex Connector

Features and Benefits

- Features a latched lever mechanism to provide secure mating into the adaptor
- Uses half the space of the SC Connector
- Connectors supplied in separate bags
- Available with 0.9mm or 3.0mm boot

Product Description

The LC Connector is now used extensively in the local area network as a standard fitting for many market leading hubs and switches. The LC is the standard for small form factor connectors.



LC Multimode Simplex Connector available with 3.0mm and 0.9mm boots

Technical Data Table

Article-No.	Type	Performance Category	Port count	Colour
855-10011	FBCMMBG-LCXXSX-0.9WH	Multimode	1	Beige (BGE)
855-10026	FBCMMBG-LCXXSX-3.0WH	Multimode	1	Beige (BGE)

All dimensions in mm. Subject to technical changes.

Technical Description

Multimode LC Connectors are supplied in individual bags including the connector, dust cover and a 3.0mm or 0.9mm boot. All connectors comply with the IEC874-14 standard ensuring interoperability.

Fibre Connectors

Single Mode LC Simplex Connector

Features and Benefits

- Features a latched lever mechanism to provide secure mating into the adaptor
- Uses half the space of the SC Connector
- Connectors supplied in separate bags
- Available with 0.9mm or 3.0mm boot

Product Description

The LC Connector is now used extensively in the local area network as a standard fitting for many market leading hubs and switches. The LC is the standard for small form factor connectors.



LC Single Mode Simplex Connector available with 3.0mm and 0.9mm boots

Technical Data Table

Article-No.	Type	Performance Category	Port count	Colour
855-10012	FBCSMBL-LCXXSX-0.9WH	Single Mode	1	Blue (BU)
855-10052	FBCSMBL-LCXXSX-3.0WH	Single Mode	1	Blue (BU)

All dimensions in mm. Subject to technical changes.

Technical Description

Single Mode LC Connectors are supplied in individual bags including the connector, dust cover and a 3.0mm or 0.9mm boot. All connectors comply with the IEC874-14 standard ensuring interoperability.



Fibre Connectors

Multimode SC Duplex Connector

Features and Benefits

- Features keyed connector to ensure secure mating into the adaptor
- Suitable for 2-3mm cables
- Connectors supplied in separate bags
- Available with 3.0mm boot

Product Description

The SC Connector is a proven design and is widely used in fibre optic systems. The connectors are keyed to ensure correct orientation on insertion.



SC Multimode Duplex Connectors

Technical Data Table

Article-No.	Type	Performance Category	Port count	Colour
855-10051	FBCMMBG-SCXXDX-3.0MX	Multimode	2	Beige (BGE)

All dimensions in mm. Subject to technical changes.

Technical Description

Multimode SC Connectors are supplied in individual bags including the connector, dust cover and a 3.0mm boot. All connectors comply with the IEC874-14 standard ensuring interoperability.

Fibre Connectors

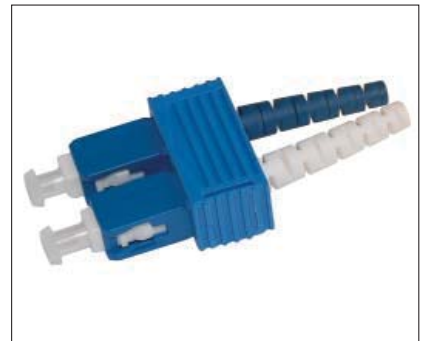
Single Mode SC Duplex Connector

Features and Benefits

- Features keyed connector to ensure secure mating into the adaptor
- Suitable for 2-3mm cables
- Connectors supplied in separate bags
- Available with 3.0mm boot

Product Description

The SC Connector is a proven design and is widely used in fibre optic systems. The connectors are keyed to ensure correct orientation on insertion.



SC Duplex Single Mode Connectors

Technical Data Table

Article-No.	Type	Performance Category	Port count	Colour
855-14222	FBCSMBL-SCXXDX-3.0MX	Single Mode	2	Blue (BU)

All dimensions in mm. Subject to technical changes.

Technical Description

Single Mode SC Connectors are supplied in individual bags including the connector, dust cover and a 3.0mm boot. All connectors comply with the IEC874-14 standard ensuring interoperability.



Fibre Connectors

Multimode SC Simplex Connector

Features and Benefits

- Features keyed connector to ensure secure mating into the adaptor
- Suitable for 2-3mm cables
- Connectors supplied in separate bags
- Available with 0.9mm or 3.0mm boot

Product Description

The SC Connector is a proven design and is widely used in fibre optic systems. The connectors are keyed to ensure correct orientation on insertion.



SC Multimode Simplex Connectors

Technical Data Table

Article-No.	Type	Performance Category	Port count	Colour
855-10032	FBCMMBG-SCXXSX-0.9WH	Multimode	1	Beige (BGE)
855-10029	FBCMMBG-SCXXSX-3.0WH	Multimode	1	Beige (BGE)

All dimensions in mm. Subject to technical changes.

Technical Description

Multimode SC Connectors are supplied in individual bags including the connector, dust cover and a 3.0mm or 0.9mm boot. All connectors comply with the IEC874-14 standard ensuring interoperability.

Fibre Connectors

Single Mode SC Simplex Connector

Features and Benefits

- Features keyed connector to ensure secure mating into the adaptor
- Suitable for 2-3mm cables
- Connectors supplied in separate bags
- Available with 0.9mm or 3.0mm boot

Product Description

The SC Connector is a proven design and is widely used in fibre optic systems. The connectors are keyed to ensure correct orientation on insertion.



SC Single Mode Simplex Connectors

Technical Data Table

Article-No.	Type	Performance Category	Port count	Colour
855-10045	FBCSMBL-SCXXSX-0.9WH	Single Mode	1	Blue (BU)
855-10046	FBCSMBL-SCXXSX-3.0WH	Single Mode	1	Blue (BU)

All dimensions in mm. Subject to technical changes.

Technical Description

Single Mode SC Connectors are supplied in individual bags including the connector, dust cover and a 3.0mm or 0.9mm boot. All connectors comply with the IEC874-14 standard ensuring interoperability.



Fibre Pigtails

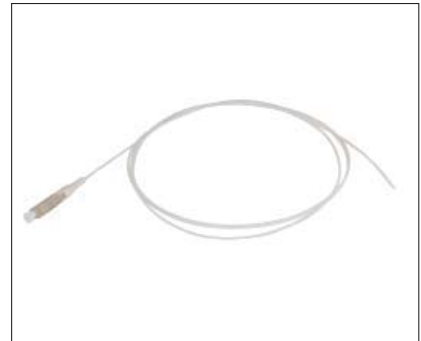
LC Pigtails

Features and Benefits

- Available in single mode and multimode
- LC and SC Connectors
- Manufactured to ISO standards
- Pre-terminated connector saves installation time on site
- Standard length 1m

Product Description

LC Pigtails are available in both single mode and multimode and are supplied in standard lengths of 1m. Other lengths and fibre types can be supplied on request.



LC Fibre Pigtails

Technical Data Table

Article-No.	Type	Performance Category	Length (L)	Port count	Colour
855-25033	FBTXOM3-LCXXSW-01.0M	OM3 Multimode	1.0 m	1	Beige (BGE)
855-25009	FBTXOS1-LCXXSW-01.0M	OS1 Single Mode	1.0 m	1	Blue (BU)

All dimensions in mm. Subject to technical changes.

Technical Description

The LC Pigtail is designed to be spliced onto existing fibre cables, eliminating the need to polish fibre ends on site.

NB. OM3 and OS1 as standard. Other fibre types (OM4, OM2, OM1 and OS2) available on request.

Fibre Pigtails

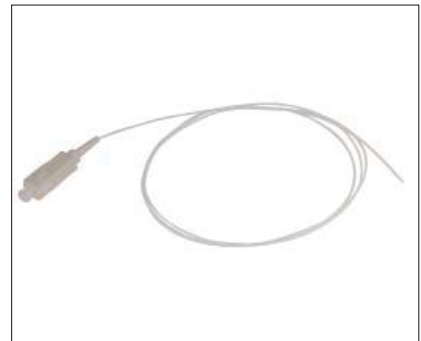
SC Pigtails

Features and Benefits

- Available in single mode and multimode
- LC and SC Connectors
- Manufactured to ISO standards
- Pre-terminated connector saves installation time on site
- Standard length 1m

Product Description

SC Pigtails are available in both single mode and multimode and are supplied in standard lengths of 1m. Other lengths and fibre types can be supplied on request.



SC Fibre Pigtails

Technical Data Table

Article-No.	Type	Performance Category	Length (L)	Port count	Colour
855-25028	FBTXOM3-SCXXSW-01.0M	OM3 Multimode	1.0 m	1	Beige (BGE)
855-25017	FBTXOS1-SCXXSW-01.0M	OS1 Single Mode	1.0 m	1	Blue (BU)

All dimensions in mm. Subject to technical changes.

Technical Description

The SC Pigtail is designed to be spliced onto existing fibre cables, eliminating the need to polish fibre ends on site.

NB. OM3 and OS1 as standard. Other fibre types (OM4, OM2, OM1 and OS2) available on request.



RapidNet MTP Fan Out Cables OM4 Multimode 24 Core MTP to LC Fan Out

Features and Benefits

- High performance low loss Elite® Connectors from US Conec
- Compatible with all MTP RapidNet Cassettes
- Available in OM3, OM4 and OS1
- LC Fan Out ideal for inter-connect with active hardware
- Pre-tested with test results supplied

Product Description

The MTP to LC Fan Out is pre-terminated and pre-tested ensuring the highest performance. The MTP Connector is the low loss Elite® Connector from US Conec and is compatible with all RapidNet MTP Cassettes.

The LC Fan Out end provides 24 LC connectors, designed as a high performance inter-connect for any patching to active hardware equipment.



MTP 24 core LC Fan Out Cable ideal for high performance fibre patching

Technical Data Table

Article-No.	Type	Performance Category	Length (L)	Port count	Colour
860-00034	FLS24M4-MFLFDA-10.0M	OM4 Multimode	10.0 m	24	Aquamarine (AE)

All dimensions in mm. Subject to technical changes.

Technical Description

All MTP Connectors and adaptors are keyed so they connect in the correct orientation ensuring the correct polarity for the link. This helps to ensure that the installation is as quick and smooth as possible and error free.

The fan out unit includes integral strain relief and the furcation tubing on the individual fibres means that the breakout fibres can be used as a standard patch lead.

NB. Part numbers shown are for 10m length. Other lengths are available. The standard fan out breakout length is 0.5m for cable lengths between 2m to 5m and 1m for cable lengths over 5m.

RapidNet MTP Fan Out Cables OM3 Multimode 24 Core MTP to LC Fan Out

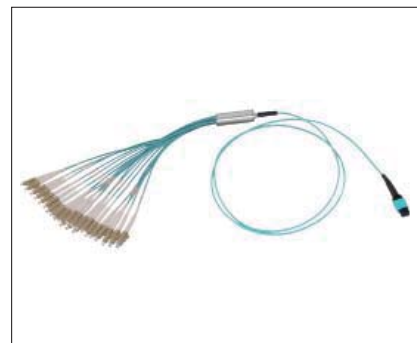
Features and Benefits

- High performance low loss Elite® Connectors from US Conec
- Compatible with all MTP RapidNet Cassettes
- Available in OM3, OM4 and OS1
- LC Fan Out ideal for inter-connect with active hardware
- Pre-tested with test results supplied

Product Description

The MTP to LC Fan Out is pre-terminated and pre-tested ensuring the highest performance. The MTP Connector is the low loss Elite® Connector from US Conec and is compatible with all RapidNet MTP Cassettes.

The LC Fan Out end provides 24 LC connectors, designed as a high performance inter-connect for any patching to active hardware equipment.



MTP 24 core LC Fan Out Cable ideal for high performance fibre patching

Technical Data Table

Article-No.	Type	Performance Category	Length (L)	Port count	Colour
860-00036	FLS24M3-MFLFDA-10.0M	OM3 Multimode	10.0 m	24	Aquamarine (AE)

All dimensions in mm. Subject to technical changes.

Technical Description

All MTP Connectors and adaptors are keyed so they connect in the correct orientation ensuring the correct polarity for the link. This helps to ensure that the installation is as quick and smooth as possible and error free.

The fan out unit includes integral strain relief and the furcation tubing on the individual fibres means that the breakout fibres can be used as a standard patch lead.

NB. Part numbers shown are for 10m length. Other lengths are available. The standard fan out breakout length is 0.5m for cable lengths between 2m to 5m and 1m for cable lengths over 5m.



RapidNet MTP Fan Out Cables OS1 Single Mode 24 Core MTP to LC Fan Out

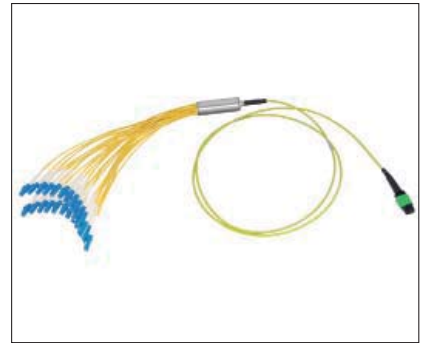
Features and Benefits

- High performance connectors from US Conec
- Compatible with all MTP RapidNet Cassettes
- Available in OM3, OM4 and OS1
- LC Fan Out ideal for inter-connect with active hardware
- Pre-tested with test results supplied

Product Description

The MTP to LC Fan Out is pre-terminated and pre-tested ensuring the highest performance. The MTP Connector from US Conec is compatible with all RapidNet MTP Cassettes.

The LC Fan Out end provides 24 LC connectors, designed as a high performance inter-connect for any patching to active hardware equipment.



MTP 24 core LC Fan Out Cable ideal for high performance fibre patching

Technical Data Table

Article-No.	Type	Performance Category	Length (L)	Port count	Colour
860-00045	FLS24S1-MFLFDY-10.0M	OS1 Single Mode	10.0 m	24	Yellow (YE)

All dimensions in mm. Subject to technical changes.

Technical Description

All MTP Connectors and Adaptors are keyed so they connect in the correct orientation ensuring the correct polarity for the link. This helps to ensure that the installation is as quick and smooth as possible and error free.

The fan out unit includes integral strain relief and the furcation tubing on the individual fibres means that the breakout fibres can be used as a standard patch lead.

NB. Part numbers shown are for 10m length. Other lengths are available. The standard fan out breakout length is 0.5m for cable lengths between 2m to 5m and 1m for cable lengths over 5m.

RapidNet MTP Fan Out Cables OM4 Multimode 12 Core MTP to LC Fan Out

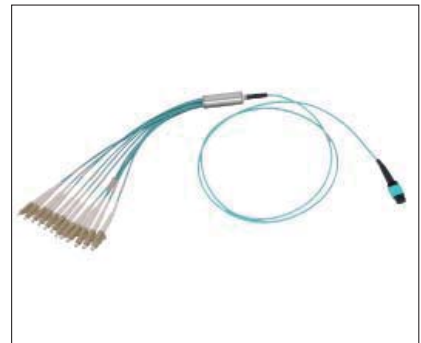
Features and Benefits

- High performance low loss Elite® Connectors from US Conec
- Compatible with all MTP RapidNet Cassettes
- Available in OM3, OM4 and OS1
- LC Fan Out ideal for inter-connect with active hardware
- Pre-tested with test results supplied

Product Description

The MTP to LC Fan Out is pre-terminated and pre-tested ensuring the highest performance. The MTP Connector is the low loss Elite® Connector from US Conec and is compatible with all RapidNet MTP Cassettes.

The LC Fan Out end provides 12 LC connectors, designed as a high performance inter-connect for any patching to active hardware equipment.



MTP 12 core LC Fan Out Cable ideal for high performance fibre patching

Technical Data Table

Article-No.	Type	Performance Category	Length (L)	Port count	Colour
860-00028	FLS12M4-MFLFDA-10.0M	OM4 Multimode	10.0 m	12	Aquamarine (AE)

All dimensions in mm. Subject to technical changes.

Technical Description

All MTP Connectors and Adaptors are keyed so they connect in the correct orientation ensuring the correct polarity for the link. This helps to ensure that the installation is as quick and smooth as possible and error free.

The fan out unit includes integral strain relief and the furcation tubing on the individual fibres means that the breakout fibres can be used as a standard patch lead.

NB. Part numbers shown are for 10m length. Other lengths are available. The standard fan out breakout length is 0.5m for cable lengths between 2m to 5m and 1m for cable lengths over 5m.



RapidNet MTP Fan Out Cables OM3 Multimode 12 Core MTP to LC Fan Out

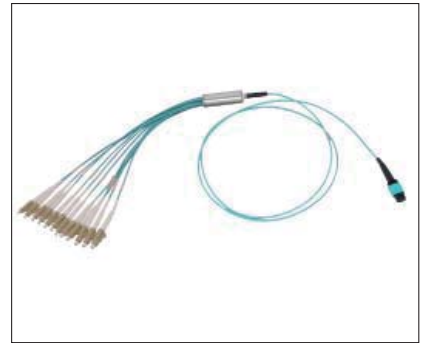
Features and Benefits

- High performance low loss Elite® Connectors from US Conec
- Compatible with all MTP RapidNet Cassettes
- Available in OM3, OM4 and OS1
- LC Fan Out ideal for inter-connect with active hardware
- Pre-tested with test results supplied

Product Description

The MTP to LC Fan Out is pre-terminated and pre-tested ensuring the highest performance. The MTP Connector is the low loss Elite® Connector from US Conec and is compatible with all RapidNet MTP Cassettes.

The LC Fan Out end provides 12 LC connectors, designed as a high performance inter-connect for any patching to active hardware equipment.



MTP 12 core LC Fan Out Cable ideal for high performance fibre patching

Technical Data Table

Article-No.	Type	Performance Category	Length (L)	Port count	Colour
860-00030	FLS12M3-MFLFDA-10.0M	OM3 Multimode	10.0 m	12	Aquamarine (AE)

All dimensions in mm. Subject to technical changes.

Technical Description

All MTP Connectors and Adaptors are keyed so they connect in the correct orientation ensuring the correct polarity for the link. This helps to ensure that the installation is as quick and smooth as possible and error free.

The fan out unit includes integral strain relief and the furcation tubing on the individual fibres means that the breakout fibres can be used as a standard patch lead.

NB. Part numbers shown are for 10m length. Other lengths are available. The standard fan out breakout length is 0.5m for cable lengths between 2m to 5m and 1m for cable lengths over 5m.

RapidNet MTP Fan Out Cables OS1 Single Mode 12 Core MTP to LC Fan Out

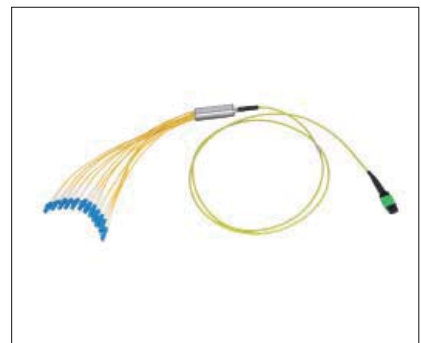
Features and Benefits

- High performance low loss Elite® Connectors from US Conec
- Compatible with all MTP RapidNet Cassettes
- Available in OM3, OM4 and OS1
- LC Fan Out ideal for inter-connect with active hardware
- Pre-tested with test results supplied

Product Description

The MTP to LC Fan Out is pre-terminated and pre-tested ensuring the highest performance. The MTP Connector is the low loss Elite® Connector from US Conec and is compatible with all RapidNet MTP Cassettes.

The LC Fan Out end provides 12 LC connectors, designed as a high performance inter-connect for any patching to active hardware equipment.



MTP 12 core LC Fan Out Cable ideal for high performance fibre patching

Technical Data Table

Article-No.	Type	Performance Category	Length (L)	Port count	Colour
860-00043	FLS12S1-MFLFDY-10.0M	OS1 Single Mode	10.0 m	12	Yellow (YE)

All dimensions in mm. Subject to technical changes.

Technical Description

All MTP Connectors and Adaptors are keyed so they connect in the correct orientation ensuring the correct polarity for the link. This helps to ensure that the installation is as quick and smooth as possible and error free.

The fan out unit includes integral strain relief and the furcation tubing on the individual fibres means that the breakout fibres can be used as a standard patch lead.

NB. Part numbers shown are for 10m length. Other lengths are available. The standard fan out breakout length is 0.5m for cable lengths between 2m to 5m and 1m for cable lengths over 5m.



Fibre Fan Outs

Multimode LC to LC Fan Out

Features and Benefits

- No fibre terminations on site
- Direct patching of equipment
- Metal fan out unit with integral cable strain relief for both distribution cable and single elements
- Simple neat patching solutions

Product Description

The LC to LC Fibre Fan Out to Fan Out cable is pre-terminated offering high performance multimode patching at both ends.

HellermannTyton are able to supply this fan out construction in a number of options from 12-144 core in OM4, OM3, OS1 and OS2.



Multimode 24 core LC Fan Out to LC Fan Out

Technical Data Table

Article-No.	Type	Performance Category	Length (L)	Port count	Colour
859-21024	RNFTD12-LFLFM3-10.0M	OM3 Multimode	10.0 m	12	Aquamarine (AE)
859-21266	RNFTD24-LFLFM3-10.0M	OM3 Multimode	10.0 m	24	Aquamarine (AE)
859-21267	RNFTD48-LFLFM3-10.0M	OM3 Multimode	10.0 m	48	Aquamarine (AE)
859-21269	RNFTD96-LFLFM3-10.0M	OM3 Multimode	10.0 m	96	Aquamarine (AE)
859-21270	RNFTDH4-LFLFM3-10.0M	OM3 Multimode	10.0 m	144	Aquamarine (AE)

All dimensions in mm. Subject to technical changes.

Technical Description

The cable being a multicore cable, is much smaller than the equivalent number of standard patch leads and therefore takes up less space in the trays and pathways. The fan out unit includes integral strain relief and the furcation tubing on the individual fibres means that the breakout fibres can be used as a standard patch lead.

NB. Part numbers shown are for 10m length. Other lengths are available. The standard fan out breakout length is 0.5m for cable lengths between 2m to 5m and 1m for cable lengths over 5m.

Fibre Fan Outs

Single Mode LC to LC Fan Out

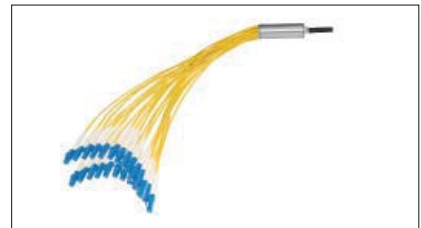
Features and Benefits

- No fibre terminations on site
- Direct patching of equipment
- Metal fan out unit with integral cable strain relief for both distribution cable and single elements
- Simple neat patching solutions

Product Description

The LC to LC Fibre Fan Out to Fan Out cable is pre-terminated offering high performance single mode patching at both ends.

HellermannTyton are able to supply this fan out construction in a number of options from 12-144 core in OM4, OM3, OS1 and OS2.



Single Mode 24 core LC Fan Out to LC Fan Out

Technical Data Table

Article-No.	Type	Performance Category	Length (L)	Port count	Colour
859-21302	RNFTD12-LFLFS1-10.0M	OS1 Single Mode	10.0 m	12	Yellow (YE)
859-21303	RNFTD24-LFLFS1-10.0M	OS1 Single Mode	10.0 m	24	Yellow (YE)
859-21304	RNFTD48-LFLFS1-10.0M	OS1 Single Mode	10.0 m	48	Yellow (YE)
859-21306	RNFTD96-LFLFS1-10.0M	OS1 Single Mode	10.0 m	96	Yellow (YE)
859-21307	RNFTDH4-LFLFS1-10.0M	OS1 Single Mode	10.0 m	144	Yellow (YE)

All dimensions in mm. Subject to technical changes.

Technical Description

The cable being a multicore cable, is much smaller than the equivalent number of standard patch leads and therefore takes up less space in the trays and pathways. The fan out unit includes integral strain relief and the furcation tubing on the individual fibres means that the breakout fibres can be used as a standard patch lead.

NB. Part numbers shown are for 10m length. Other lengths are available. The standard fan out breakout length is 0.5m for cable lengths between 2m to 5m and 1m for cable lengths over 5m.



Fibre Fan Outs

Multimode SC to SC Fan Out

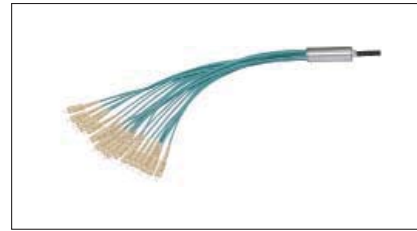
Features and Benefits

- No fibre terminations on site
- Direct patching of equipment
- Metal fan out unit with integral cable strain relief for both distribution cable and single elements
- Simple neat patching solutions

Product Description

The SC to SC Fibre Fan Out to Fan Out cable is pre-terminated offering high performance multimode patching at both ends.

HellermannTyton are able to supply this fan out construction in a number of options from 12-144 core in OM4, OM3, OS1 and OS2.



Multimode 24 core SC Fan Out to SC Fan Out

Technical Data Table

Article-No.	Type	Performance Category	Length (L)	Port count	Colour
859-21735	RNFTD12-SFSFM3-10.0M	OM3 Multimode	10.0 m	12	Aquamarine (AE)
859-21279	RNFTS24-SFSFM3-10.0M	OM3 Multimode	10.0 m	24	Aquamarine (AE)
859-21736	RNFTD48-SFSFM3-10.0M	OM3 Multimode	10.0 m	48	Aquamarine (AE)
859-21737	RNFTD96-SFSFM3-10.0M	OM3 Multimode	10.0 m	96	Aquamarine (AE)
859-21738	RNFTDH4-SFSFM3-10.0M	OM3 Multimode	10.0 m	144	Aquamarine (AE)

All dimensions in mm. Subject to technical changes.

Technical Description

The cable being a multicore cable, is much smaller than the equivalent number of standard patch leads and therefore takes up less space in the trays and pathways. The fan out unit includes integral strain relief and the furcation tubing on the individual fibres means that the breakout fibres can be used as a standard patch lead.

NB. Part numbers shown are for 10m length. Other lengths are available. The standard fan out breakout length is 0.5m for cable lengths between 2m to 5m and 1m for cable lengths over 5m.

Fibre Fan Outs

Single Mode SC to SC Fan Out

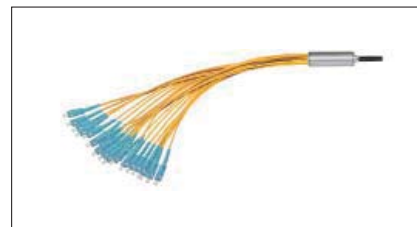
Features and Benefits

- No fibre terminations on site
- Direct patching of equipment
- Metal fan out unit with integral cable strain relief for both distribution cable and single elements
- Simple neat patching solutions

Product Description

The SC to SC Fibre Fan Out to Fan Out cable is pre-terminated offering high performance single mode patching at both ends.

HellermannTyton are able to supply this fan out construction in a number of options from 12-144 core in OM4, OM3, OS1 and OS2.



Single Mode 24 core SC Fan Out to SC Fan Out

Technical Data Table

Article-No.	Type	Performance Category	Length (L)	Port count	Colour
859-21739	RNFTD12-SFSFS1-10.0M	OS1 Single Mode	10.0 m	12	Yellow (YE)
859-21315	RNFTS24-SFSFS1-10.0M	OS1 Single Mode	10.0 m	24	Yellow (YE)
859-21740	RNFTD48-SFSFS1-10.0M	OS1 Single Mode	10.0 m	48	Yellow (YE)
859-21741	RNFTD96-SFSFS1-10.0M	OS1 Single Mode	10.0 m	96	Yellow (YE)
859-21742	RNFTDH4-SFSFS1-10.0M	OS1 Single Mode	10.0 m	144	Yellow (YE)

All dimensions in mm. Subject to technical changes.

Technical Description

The cable being a multicore cable, is much smaller than the equivalent number of standard patch leads and therefore takes up less space in the trays and pathways. The fan out unit includes integral strain relief and the furcation tubing on the individual fibres means that the breakout fibres can be used as a standard patch lead.

NB. Part numbers shown are for 10m length. Other lengths are available. The standard fan out breakout length is 0.5m for cable lengths between 2m to 5m and 1m for cable lengths over 5m.



RapidNet MTP Back-Bone Cables OM4 Multimode 24 Core MTP

Features and Benefits

- High performance low loss Elite® Connectors from US Conec
- Compatible with all MTP RapidNet Cassettes
- Available in OM3, OM4 and OS1
- Can be used as back-bone fibre link or MTP Patch Lead
- Pre-tested with test results supplied

Product Description

The MTP Back-Bone cable is pre-terminated and pre-tested ensuring the highest performance. The MTP Connector is the low loss Elite® Connector from US Conec and is compatible with all RapidNet MTP Cassettes.

The MTP Back-Bone cable can be used for high density patching between two MTP ports.



MTP Back-Bone cable with low loss Elite® Connectors from US Conec

Technical Data Table

Article-No.	Type	Performance Category	Length (L)	Colour
860-00008	FLX24M4-MFMFXA-10.0M	OM4 Multimode	10.0	Aquamarine (AE)

All dimensions in mm. Subject to technical changes.

Technical Description

US Conec MTP brand Connectors provide quick and simple connection for 12 or 24 fibres in a single housing. The Elite® low loss Connector ensures the optical alignment through patented high precision pins and floating ferrule and conforms with IEC 61754-7 and TIA 604-5.

NB. Part numbers shown are for 10m length. Other lengths are available.

RapidNet MTP Back-Bone Cables OM3 Multimode 24 Core MTP

Features and Benefits

- High performance low loss Elite® Connectors from US Conec
- Compatible with all MTP RapidNet Cassettes
- Available in OM3, OM4 and OS1
- Can be used as back-bone fibre link or MTP Patch Lead
- Pre-tested with test results supplied

Product Description

The MTP Back-Bone cable is pre-terminated and pre-tested ensuring the highest performance. The MTP Connector is the low loss Elite® Connector from US Conec and is compatible with all RapidNet MTP Cassettes.

The MTP Back-Bone cable can be used for high density patching between two MTP ports.



MTP Back-Bone cable with low loss Elite® Connectors from US Conec

Technical Data Table

Article-No.	Type	Performance Category	Length (L)	Colour
860-00011	FLX24M3-MFMFXA-10.0M	OM3 Multimode	10.0 m	Aquamarine (AE)

All dimensions in mm. Subject to technical changes.

Technical Description

US Conec MTP brand Connectors provide quick and simple connection for 12 or 24 fibres in a single housing. The Elite® low loss Connector ensures the optical alignment through patented high precision pins and floating ferrule and conforms with IEC 61754-7 and TIA 604-5.

NB. Part numbers shown are for 10m length. Other lengths are available.



RapidNet MTP Back-Bone Cables OS1 Multimode 24 Core MTP

Features and Benefits

- High performance connectors from US Conec
- Compatible with all MTP RapidNet Cassettes
- Available in OM3, OM4 and OS1
- Can be used as back-bone fibre link or MTP Patch Lead
- Pre-tested with test results supplied

Product Description

The MTP Back-Bone cable is pre-terminated and pre-tested ensuring the highest performance. The MTP connector from US Conec is compatible with all RapidNet MTP Cassettes.

The MTP Back-Bone cable can be used for high density patching between two MTP ports.



MTP Back-Bone cable with connectors from US Conec

Technical Data Table

Article-No.	Type	Performance Category	Length (L)	Colour
860-00014	FLS24S1-MFMFX-10.0M	OS1 Single Mode	10.0 m	Yellow (YE)

All dimensions in mm. Subject to technical changes.

Technical Description

US Conec MTP brand Connectors provide quick and simple connection for 12 or 24 fibres in a single housing. The patented floating ferrule design helps to ensure good optical alignment of all fibres and conforms with IEC 61754-7 and TIA 604-5.

NB. Part numbers shown are for 10m length. Other lengths are available.

RapidNet MTP Back-Bone Cables OM4 Multimode 12 Core MTP

Features and Benefits

- High performance low loss Elite® Connectors from US Conec
- Compatible with all MTP RapidNet Cassettes
- Available in OM3, OM4 and OS1
- Can be used as back-bone fibre link or MTP Patch Lead
- Pre-tested with test results supplied

Product Description

The MTP Back-Bone cable is pre-terminated and pre-tested ensuring the highest performance. The MTP Connector is the low loss Elite® Connector from US Conec and is compatible with all RapidNet MTP Cassettes.

The MTP Back-Bone cable can be used for high density patching between two MTP ports.



MTP Back-Bone cable with low loss Elite® Connectors from US Conec

Technical Data Table

Article-No.	Type	Performance Category	Length (L)	Colour
860-00017	FLS12M4-MFMFXA-10.0M	OM4 Multimode	10.0 m	Aquamarine (AE)

All dimensions in mm. Subject to technical changes.

Technical Description

US Conec MTP brand Connectors provide quick and simple connection for 12 or 24 fibres in a single housing. The Elite® low loss Connector ensures the optical alignment through patented high precision pins and floating ferrule and conforms with IEC 61754-7 and TIA 604-5.

NB. Part numbers shown are for 10m length. Other lengths are available.



RapidNet MTP Back-Bone Cables OM3 Multimode 12 Core MTP

Features and Benefits

- High performance low loss Elite® Connectors from US Conec
- Compatible with all MTP RapidNet Cassettes
- Available in OM3, OM4 and OS1
- Can be used as back-bone fibre link or MTP Patch Lead
- Pre-tested with test results supplied

Product Description

The MTP Back-Bone cable is pre-terminated and pre-tested ensuring the highest performance. The MTP Connector is the low loss Elite® Connector from US Conec and is compatible with all RapidNet MTP Cassettes.

The MTP Back-Bone cable can be used for high density patching between two MTP ports.



MTP Back-Bone cable with low loss Elite® Connectors from US Conec

Technical Data Table

Article-No.	Type	Performance Category	Length (L)	Colour
860-00020	FLS12M3-MFMFXA-10.0M	OM3 Multimode	10.0 m	Aquamarine (AE)

All dimensions in mm. Subject to technical changes.

Technical Description

US Conec MTP brand Connectors provide quick and simple connection for 12 or 24 fibres in a single housing. The Elite® low loss Connector ensures the optical alignment through patented high precision pins and floating ferrule and conforms with IEC 61754-7 and TIA 604-5.

NB. Part numbers shown are for 10m length. Other lengths are available.

RapidNet MTP Back-Bone Cables OS1 Single Mode 12 Core MTP

Features and Benefits

- High performance low loss Elite® Connectors from US Conec
- Compatible with all MTP RapidNet Cassettes
- Available in OM3, OM4 and OS1
- Can be used as back-bone fibre link or MTP Patch Lead
- Pre-tested with test results supplied

Product Description

The MTP Back-Bone cable is pre-terminated and pre-tested ensuring the highest performance. The MTP Connector is the low loss Elite® Connector from US Conec and is compatible with all RapidNet MTP cassettes.

The MTP Back-Bone cable can be used for high density patching between two MTP ports.



MTP Back-Bone cable with low loss Elite® Connectors from US Conec

Technical Data Table

Article-No.	Type	Performance Category	Length (L)	Colour
860-00023	FLS12S1-MFMFXA-10.0M	OS1 Single Mode	10.0 m	Yellow (YE)

All dimensions in mm. Subject to technical changes.

Technical Description

US Conec MTP brand Connectors provide quick and simple connection for 12 or 24 fibres in a single housing. The Elite® low loss Connector ensures the optical alignment through patented high precision pins and floating ferrule and conforms with IEC 61754-7 and TIA 604-5.

NB. Part numbers shown are for 10m length. Other lengths are available.



Fibre Panels

LC Multimode Panel

Features and Benefits

- Sliding Panels for easy access when terminating
- On board Fibre Optic Management
- Multiple cable entry options and securing points
- Available in Duplex (48 fibre) and Quad (96 fibre)
- Also available in single mode
- Supplied with Rack Snap mounting fixings

Product Description

The 19" sliding drawer patch panel with 24 vertical slots for LC Adaptors (duplex or quad).

The panel is supplied pre-loaded with the required adaptors with any unused slots fitted with blanks, each fibre port is numbered separately to make identification easier.



Fibre panels from HellermannTyton can be fitted with LC Duplex, LC Quad, SC Simplex and SC Duplex adapters

Technical Data Table

Article-No.	Type	Performance Category	Height (H)	Width (W)	Depth (D)	Port count	Colour
855-00221	FBPDBKL-LCMMDX-24VF1	Multimode	44.0	483.0	200.0	48	Black (BK)
855-00266	FBPDBKL-LCMMQD-24VF1	Multimode	44.0	483.0	200.0	96	Black (BK)

All dimensions in mm. Subject to technical changes.

Technical Description

The rear of the drawer offers a number of cable options including 4x10mm and 2x20mm gland holes, and a removable section in the centre for specialist cables or patch leads. In addition, the base of the tray has cable securing points and cable management holes for

securing Fibre Optic Management (FOM). Adjustable mounting ears allow the panel to be positioned within the rack or frame.

Fibre Panels

LC Single Mode Panel

Features and Benefits

- Sliding Panels for easy access when terminating
- On board Fibre Optic Management
- Multiple cable entry options and securing points
- Available in Duplex (48 fibre) and Quad (96 fibre)
- Also available in multimode
- Supplied with Rack Snap mounting fixings

Product Description

The 19" sliding drawer patch panel with 24 vertical slots for LC Adaptors (duplex or quad).

The panel is supplied pre-loaded with the required adaptors with any unused slots fitted with blanks, each fibre port is numbered separately to make identification easier.



Fibre panels from HellermannTyton can be fitted with LC Duplex, LC Quad, SC Simplex and SC Duplex adapters

Technical Data Table

Article-No.	Type	Performance Category	Height (H)	Width (W)	Depth (D)	Port count	Colour
855-00222	FBPDBKL-LCSMDX-24VF1	Single Mode	44.0	483.0	200.0	48	Black (BK)
855-00268	FBPDBKL-LCSMQD-24VF1	Single Mode	44.0	483.0	200.0	96	Black (BK)

All dimensions in mm. Subject to technical changes.

Technical Description

The rear of the drawer offers a number of cable options including 4x10mm and 2x20mm gland holes, and a removable section in the centre for specialist cables or patch leads. In addition, the base of the tray has cable securing points and cable management holes for

securing Fibre Optic Management (FOM). Adjustable mounting ears allow the panel to be positioned within the rack or frame.



Fibre Panels

SC Multimode Panel

Features and Benefits

- Sliding Panels for easy access when terminating
- On board Fibre Optic Management
- Multiple cable entry options and securing points
- Available in duplex (48 fibre)
- Also available in multimode
- Supplied with Rack Snap mounting fixings

Product Description

The 19" sliding drawer patch panel with 24 vertical slots for SC Adaptors (simplex or duplex).

The panel is supplied pre-loaded with the required adaptors with any unused slots fitted with blanks, each fibre port is numbered separately to make identification easier.



Fibre panels from HellermannTyton can be fitted with LC Duplex, LC Quad, SC Simplex and SC Duplex adapters

Technical Data Table

Article-No.	Type	Performance Category	Height (H)	Width (W)	Depth (D)	Port count	Colour
855-00218	FBPDBKL-SCMMDX-24VF1	Multimode	44.0	483.0	200.0	48	Black (BK)

All dimensions in mm. Subject to technical changes.

Technical Description

The rear of the drawer offers a number of cable options including 4x10mm and 2x20mm gland holes, and a removable section in the centre for specialist cables or patch leads. In addition, the base of the tray has cable securing points and cable management holes for

securing Fibre Optic Management (FOM). Adjustable mounting ears allow the panel to be positioned within the rack or frame.

Fibre Panels

SC Single Mode Panel

Features and Benefits

- Sliding Panels for easy access when terminating
- On board Fibre Optic Management
- Multiple cable entry options and securing points
- Available in duplex (48 fibre)
- Also available in multimode
- Supplied with Rack Snap mounting fixings

Product Description

The 19" sliding drawer patch panel with 24 vertical slots for SC Adaptors (simplex or duplex).

The panel is supplied pre-loaded with the required adaptors with any unused slots fitted with blanks, each fibre port is numbered separately to make identification easier.



Fibre panels from HellermannTyton can be fitted with LC Duplex, LC Quad, SC Simplex and SC Duplex adapters

Technical Data Table

Article-No.	Type	Performance Category	Height (H)	Width (W)	Depth (D)	Port count	Colour
855-00219	FBPDBKL-SCSMDX-24VF1	Single Mode	44.0	483.0	200.0	48	Black (BK)

All dimensions in mm. Subject to technical changes.

Technical Description

The rear of the drawer offers a number of cable options including 4x10mm and 2x20mm gland holes, and a removable section in the centre for specialist cables or patch leads. In addition, the base of the tray has cable securing points and cable management holes for

securing Fibre Optic Management (FOM). Adjustable mounting ears allow the panel to be positioned within the rack or frame.