

Pre-tubed Closures

9

Page

9.1 Pre-tubed Closures

Introduction

108



Introduction



HellermannTyton is now able to supply pre-assembled pre-tubed fibre optic closures, greatly reducing installation time, cost and complexity for blown fibre FTTH applications.

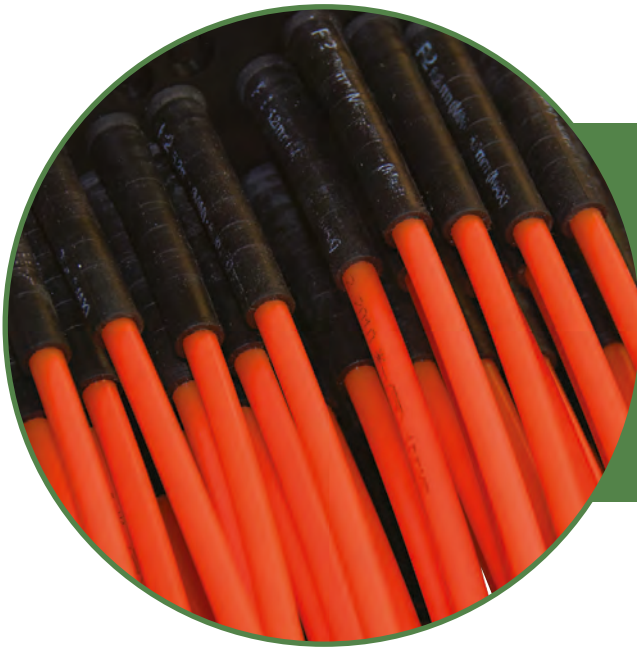
For many years, HellermannTyton has supplied market leading closures to the telecommunications industry for long haul, metropolitan and access networks. With the emergence of Fibre-To-The-Home (FTTH) access networks, blown fibre is gaining increasing importance and HellermannTyton has expanded its offering to provide closures which add significant value to blown fibre installations.

HellermannTyton's range of closures (FDN, UFC, FML, FST and FRBU) are available as customised kits, pre-assembled to the customer's requirements to include blown fibre tubes, adapters and reducers. Once installed, fibre can be blown directly onto the splice trays within the closure, utilising the internal tubed fibre management system.

Pre-assembled closures greatly reduce on site installation time, labour costs and hence overall capital expenditure of a blown fibre FTTH network deployment whilst increasing roll out capacity. In addition, the solution improves installation quality by removing many of the "craft sensitive" elements. Finally, kitting and pre-assembly of closures minimises the number of components and hence offers purchasing and logistics benefits.

Features and Benefits

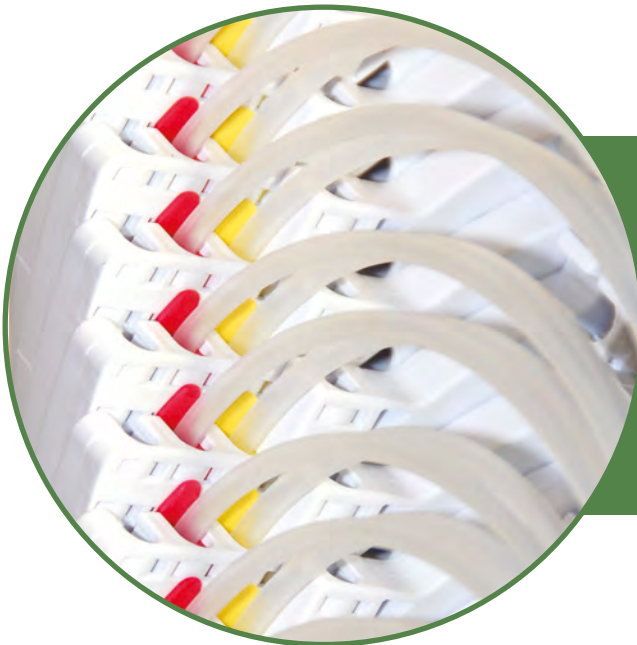
- Reduce on site installation time and cost
- Increase available installation capacity
- Improve installation quality
- Simplify purchasing and logistics
- Closures custom configured to meet specific customer requirements
- Fibre blown directly onto splice trays
- A range of tube dimensions and types
- Tube identification to customer specification



All pre-tubed closures are supplied using Cablelok to seal the blown fibre tubes into the closure. HellermannTyton's 100% mechanical seal Cablelok provides a high quality, consistent seal between the tubes and the closure port with excellent non-leak performance, tested to in excess of 6m head of water.



The blown fibre tubing that enters the closure through the ports are all fitted with reducers as standard. These reducers produce a seal between the blown fibre tubing and the transportation tubing, allowing the fibre to be blown up into the closures and directly onto the fibre splice trays.



The transportation tubing carries the blown fibre onto the splice trays where the fibre can be spliced and then redirected back out of the trays.

The tubing is secured onto the trays using HellermannTyton's Tubefix.

All pre-tubed closures are supplied with cable/tube markers for efficient fibre identification.

LAN Connectivity Product Catalogue available



Please contact
our sales team for
your own copy today



www.htdata.co.uk

HellermannTyton