

|                      | Page |
|----------------------|------|
| <b>11.1 Cablelok</b> |      |
| Introduction         | 120  |
| R Port Cablelok      | 122  |
| B Port Cablelok      | 123  |
| S Port Cablelok      | 124  |
| T Port Cablelok      | 125  |
| LM Port Cablelok     | 126  |
| L Port Cablelok      | 127  |
| Port Opening Tools   | 128  |

 Introduction

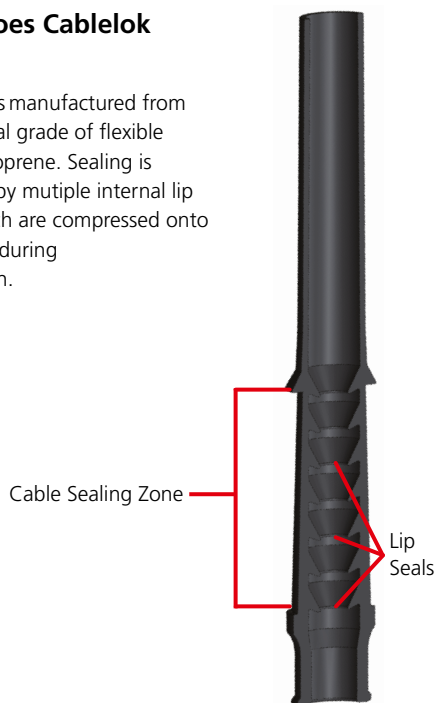
Oval Port Cablelok



Round Port Cableloks

### How does Cablelok work?

Cablelok is manufactured from an external grade of flexible polychloroprene. Sealing is achieved by multiple internal lip seals which are compressed onto the cable during installation.



### Cablelok™

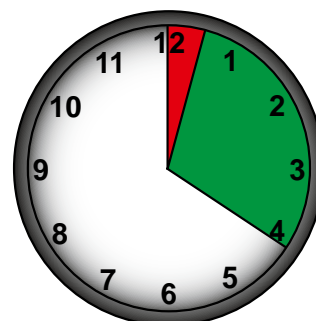
#### 100% Mechanical Seal

Fibre engineers and network owners are increasingly insisting on 100% mechanically sealed closures. Traditional heatshrink methods for cable sealing are time consuming; dependent on the skill of the engineer; and the access required around the port means heatshrink is not conducive to high port densities, particularly applicable in today's FTTX environment. There are also health and safety concerns relating to gas bottle storage/transportation and confined space use.

HellermannTyton's patented Cablelok mechanical seal enables fast safe cable installation, providing a highly repeatable and consistent seal between the cable and the closure port with excellent non-leak performance. Tested to in excess of 6m head of water, the Cablelok does not rely on the skill and experience of the engineer to achieve the required seal, whilst installation times are typically reduced by up to 90%.

#### Features and Benefits

- Excellent sealing properties to in excess of 6m head of water (58.8kPa)
- Rapid installation with no specialist tools required
- Highly repeatable – the quality of the seal is not dependent on the skill of the engineer
- Eliminates the need for potentially hazardous gas bottle transportation and storage
- Ideal for use in hazardous or restricted areas as no heat or gas is required for installation
- Dual outlet versions for loop through applications
- Multi-hole versions are available allowing two cable drops from the same port
- Proven technology in the field



 Cablelok™ - 2 mins

 Heatshrink - 20 mins



## Selecting the Correct Cablelok

Each port size on the HellermannTyton closures has a unique identifier and a dedicated series of Cableloks (ie: R, B, S, T, LM or L). Every Cablelok within a series is specifically designed to accommodate a range of cable diameters. Achieving the required seal performance is simply a case of selecting the correct Cablelok for the port and cable combination being used.

### Step 1

Determine the diameter of the cable being used.

### Step 2

Choose the appropriate closure port to be used and hence port identifier.

### Step 3

Identify the correct Cablelok using the port and cable ranges shown below.

### R Port

| Cable Ø Range (mm)          | Part Number                          | Pack Quantity | UNS No.                |
|-----------------------------|--------------------------------------|---------------|------------------------|
| 1.7 - 2.0                   | CABLELOK-R10-01<br>CABLELOK-R10-10   | 1<br>10       | 857-50163<br>857-50164 |
| 2 x 1.7 - 2.0<br>(2 Cables) | CABLELOK-R10D-01<br>CABLELOK-R10D-10 | 1<br>10       | 857-50161<br>857-50162 |
| 2.0 - 3.0                   | CABLELOK-R15-01<br>CABLELOK-R15-10   | 1<br>10       | 857-50224<br>857-50225 |
| 3.0 - 3.8                   | CABLELOK-R20-01<br>CABLELOK-R20-10   | 1<br>10       | 857-50165<br>857-50166 |
| 2 x 3.8 - 4.8<br>(2 Cables) | CABLELOK-R30D-01<br>CABLELOK-R30D-10 | 1<br>10       | 857-50159<br>857-50160 |
| 3.8 - 5.2                   | CABLELOK-R40-01<br>CABLELOK-R40-10   | 1<br>10       | 857-50151<br>857-50152 |
| 5.2 - 8.0                   | CABLELOK-R50-01<br>CABLELOK-R50-10   | 1<br>10       | 857-50153<br>857-50154 |
| 6.0 - 8.5                   | CABLELOK-R70-01<br>CABLELOK-R70-10   | 1<br>10       | 857-50167<br>857-50168 |
| 8.0 - 9.5                   | CABLELOK-R80-01<br>CABLELOK-R80-10   | 1<br>10       | 857-50155<br>857-50156 |
| Port Closure Plug           | CABLELOK-R99-01<br>CABLELOK-R99-10   | 1<br>10       | 857-50157<br>857-50158 |

### B Port

| Cable Ø Range (mm) | Part Number                        | Pack Quantity | UNS No.                |
|--------------------|------------------------------------|---------------|------------------------|
| 4.8 - 9.0          | CABLELOK-B10-01<br>CABLELOK-B10-10 | 1<br>10       | 857-50149<br>857-50150 |
| 8.0 - 14.0         | CABLELOK-B20-01<br>CABLELOK-B20-10 | 1<br>10       | 857-50143<br>857-50144 |
| 13.0 - 16.5        | CABLELOK-B30-01<br>CABLELOK-B30-10 | 1<br>10       | 857-50145<br>857-50146 |
| Port Closure Plug  | CABLELOK-B99-01<br>CABLELOK-B99-10 | 1<br>10       | 857-50147<br>857-50148 |

### S Port

| Cable Ø Range (mm)            | Part Number                          | Pack Quantity | UNS No.                |
|-------------------------------|--------------------------------------|---------------|------------------------|
| 5.0 - 8.5                     | CABLELOK-S10-01<br>CABLELOK-S10-10   | 1<br>10       | 857-50179<br>857-50180 |
| 8.0 - 12.0                    | CABLELOK-S20-01<br>CABLELOK-S20-10   | 1<br>10       | 857-50169<br>857-50170 |
| 2 x 10.0 - 11.5<br>(2 Cables) | CABLELOK-S30D-01<br>CABLELOK-S30D-10 | 1<br>10       | 857-50177<br>857-50178 |
| 12.0 - 16.0                   | CABLELOK-S40-01<br>CABLELOK-S40-10   | 1<br>10       | 857-50171<br>857-50172 |
| 16.0 - 20.0                   | CABLELOK-S50-01<br>CABLELOK-S50-10   | 1<br>10       | 857-50173<br>857-50174 |
| Port Closure Plug             | CABLELOK-S99-01<br>CABLELOK-S99-10   | 1<br>10       | 857-50175<br>857-50176 |

### T Port

| Cable Ø Range (mm) | Part Number                        | Pack Quantity | UNS No.                |
|--------------------|------------------------------------|---------------|------------------------|
| 15.5 - 22.0        | CABLELOK-T10-01<br>CABLELOK-T10-10 | 1<br>10       | 857-50189<br>857-50190 |
| 20.0 - 23.5        | CABLELOK-T20-01<br>CABLELOK-T20-10 | 1<br>10       | 857-50181<br>857-50182 |
| 23.5 - 25.5        | CABLELOK-T30-01<br>CABLELOK-T30-10 | 1<br>10       | 857-50183<br>857-50184 |
| 24.5 - 29.0        | CABLELOK-T40-01<br>CABLELOK-T40-10 | 1<br>10       | 857-50185<br>857-50186 |
| Port Closure Plug  | CABLELOK-T99-01<br>CABLELOK-T99-10 | 1<br>10       | 857-50187<br>857-50188 |

### LM Port

| Cable Ø Range (mm) | Part Number                            | Pack Quantity | UNS No.                |
|--------------------|--|---------------|------------------------|
| 2 x 4.0 - 6.5      | CABLELOK-LM10C-01<br>CABLELOK-LM10C-10 | 1<br>10       | 857-50203<br>857-50204 |
| 2 x 6.0 - 9.5      | CABLELOK-LM20C-01<br>CABLELOK-LM20C-10 | 1<br>10       | 857-50205<br>857-50206 |
| 2 x 9.0 - 12.5     | CABLELOK-LM30C-01<br>CABLELOK-LM30C-10 | 1<br>10       | 857-50207<br>857-50208 |
| 2 x 12.0 - 15.0    | CABLELOK-LM40C-01<br>CABLELOK-LM40C-10 | 1<br>10       | 857-50209<br>857-50210 |
| Port Closure Plug  | CABLELOK-LM99C-01<br>CABLELOK-LM99C-10 | 1<br>10       | 857-50211<br>857-50212 |

### L Port

| Cable Ø Range (mm) | Part Number                          | Pack Quantity | UNS No.                |
|--------------------|--------------------------------------|---------------|------------------------|
| 2 x 5.5 - 9.5      | CABLELOK-L10C-01<br>CABLELOK-L10C-10 | 1<br>10       | 857-50199<br>857-50200 |
| 2 x 9.0 - 12.5     | CABLELOK-L20C-01<br>CABLELOK-L20C-10 | 1<br>10       | 857-50213<br>857-50214 |
| 2 x 12.0 - 15.0    | CABLELOK-L30C-01<br>CABLELOK-L30C-10 | 1<br>10       | 857-50191<br>857-50192 |
| 2 x 15.0 - 18.5    | CABLELOK-L40C-01<br>CABLELOK-L40C-10 | 1<br>10       | 857-50193<br>857-50194 |
| 2 x 18.3 - 20.0    | CABLELOK-L50C-01<br>CABLELOK-L50C-10 | 1<br>10       | 857-50195<br>857-50196 |
| Port Closure Plug  | CABLELOK-L99C-01<br>CABLELOK-L99C-10 | 1<br>10       | 857-50197<br>857-50198 |



## R Port Cablelok

### Features and Benefits

- Cable range coverage from 1.7mm to 9.5mm
- Multi-hole versions available to allow 2 cable drops from the same port
- Multi-hole cable range coverage from 1.7mm – 2.0mm and 3.8mm – 4.8mm
- Port closure plug available
- Supplied in multiples of 1 and 10
- Supplied with installation lubricant sachets



R Series Cablelok

### Technical Description

The R Port Cablelok is a mechanical seal manufactured from external grade of Polychloroprene. There are 9 Cableloks which cover a cable range of 1.7mm – 9.5mm including two multi-hole versions to allow two cable drops from the same port and a port plug for blocking unused R sized cable entry ports.

### Technical Data Table

| Article-No. | Type             | Suitable for Cable Ø from/to | Pack Quantity |
|-------------|------------------|------------------------------|---------------|
| 857-50163   | CABLELOK-R10-01  | 1.7 - 2.0                    | 1             |
| 857-50164   | CABLELOK-R10-10  | 1.7 - 2.0                    | 10            |
| 857-50161   | CABLELOK-R10D-01 | 2 x 1.7 - 2.0                | 1             |
| 857-50162   | CABLELOK-R10D-10 | 2 x 1.7 - 2.0                | 10            |
| 857-50224   | CABLELOK-R15-01  | 2.0 - 3.0                    | 1             |
| 857-50225   | CABLELOK-R15-10  | 2.0 - 3.0                    | 10            |
| 857-50165   | CABLELOK-R20-01  | 3.0 - 3.8                    | 1             |
| 857-50166   | CABLELOK-R20-10  | 3.0 - 3.8                    | 10            |
| 857-50159   | CABLELOK-R30D-01 | 2 x 3.8 - 4.8                | 1             |
| 857-50160   | CABLELOK-R30D-10 | 2 x 3.8 - 4.8                | 10            |
| 857-50151   | CABLELOK-R40-01  | 3.8 - 5.2                    | 1             |
| 857-50152   | CABLELOK-R40-10  | 3.8 - 5.2                    | 10            |
| 857-50153   | CABLELOK-R50-01  | 5.2 - 8.0                    | 1             |
| 857-50154   | CABLELOK-R50-10  | 5.2 - 8.0                    | 10            |
| 857-50167   | CABLELOK-R70-01  | 6.0 - 8.5                    | 1             |
| 857-50168   | CABLELOK-R70-10  | 6.0 - 8.5                    | 10            |
| 857-50155   | CABLELOK-R80-01  | 8.0 - 9.5                    | 1             |
| 857-50156   | CABLELOK-R80-10  | 8.0 - 9.5                    | 10            |
| 857-50157   | CABLELOK-R99-01  | Port Plug                    | 1             |
| 857-50158   | CABLELOK-R99-10  | Port Plug                    | 10            |

All dimensions in mm. Subject to technical changes.



## B Port Cablelok

### Features and Benefits

- Cable range coverage from 4.8mm to 16.5mm
- Port closure plug available
- Supplied in multiples of 1 and 10
- Supplied with installation lubricant sachets



*B Series Cablelok*

### Technical Description

The B Port Cablelok is a mechanical seal manufactured from external grade of Polychloroprene. There are 4 Cableloks which cover a cable range of 4.8mm – 16.5mm including a port plug for blocking unused B sized cable entry ports.

### Technical Data Table

| Article-No. | Type            | Suitable for Cable Ø from/to | Pack Quantity |
|-------------|-----------------|------------------------------|---------------|
| 857-50149   | CABLELOK-B10-01 | 4.8 - 9.0                    | 1             |
| 857-50150   | CABLELOK-B10-10 | 4.8 - 9.0                    | 10            |
| 857-50143   | CABLELOK-B20-01 | 8.0 - 14.0                   | 1             |
| 857-50144   | CABLELOK-B20-10 | 8.0 - 14.0                   | 10            |
| 857-50145   | CABLELOK-B30-01 | 13.0 - 16.5                  | 1             |
| 857-50146   | CABLELOK-B30-10 | 13.0 - 16.5                  | 10            |
| 857-50147   | CABLELOK-B99-01 | Port Plug                    | 1             |
| 857-50148   | CABLELOK-B99-10 | Port Plug                    | 10            |

All dimensions in mm. Subject to technical changes.



## S Port Cablelok

### Features and Benefits

- Cable range coverage from 5.0mm to 20.0mm
- Multi-hole version available to allow 2 cable drops from the same port
- Multi-hole cable range coverage from 10.0mm – 11.5mm
- Port closure plug available
- Supplied in multiples of 1 and 10
- Supplied with installation lubricant sachets



S Series Cablelok

### Technical Description

The S Port Cablelok is a mechanical seal manufactured from external grade of Polychloroprene. There are 6 Cableloks which cover a cable range of 5.0mm – 20.0mm including one multi-hole version to allow two cable drops from the same port and a port plug for blocking unused S sized cable entry ports.

### Technical Data Table

| Article-No. | Type             | Suitable for Cable Ø from/to | Pack Quantity |
|-------------|------------------|------------------------------|---------------|
| 857-50179   | CABLELOK-S10-01  | 5.0 - 8.5                    | 1             |
| 857-50180   | CABLELOK-S10-10  | 5.0 - 8.5                    | 10            |
| 857-50169   | CABLELOK-S20-01  | 8.0 - 12.0                   | 1             |
| 857-50170   | CABLELOK-S20-10  | 8.0 - 12.0                   | 10            |
| 857-50177   | CABLELOK-S30D-01 | 2 x 10.0 - 11.5              | 1             |
| 857-50178   | CABLELOK-S30D-10 | 2 x 10.0 - 11.5              | 10            |
| 857-50171   | CABLELOK-S40-01  | 12.0 - 16.0                  | 1             |
| 857-50172   | CABLELOK-S40-10  | 12.0 - 16.0                  | 10            |
| 857-50173   | CABLELOK-S50-01  | 16.0 - 20.0                  | 1             |
| 857-50174   | CABLELOK-S50-10  | 16.0 - 20.0                  | 10            |
| 857-50175   | CABLELOK-S99-01  | Port Plug                    | 1             |
| 857-50176   | CABLELOK-S99-10  | Port Plug                    | 10            |

All dimensions in mm. Subject to technical changes.



## T Port Cablelok

### Features and Benefits

- Cable range coverage from 15.5mm to 29.0mm
- Port closure plug available
- Supplied in multiples of 1 and 10
- Supplied with installation lubricant sachets



T Series Cablelok

### Technical Description

The T Port Cablelok is a mechanical seal manufactured from external grade of Polychloroprene. There are 5 Cableloks which cover a cable range of 15.5mm – 29.0mm including a port plug for blocking unused T sized cable entry ports.

### Technical Data Table

| Article-No. | Type            | Suitable for Cable Ø from/to | Pack Quantity |
|-------------|-----------------|------------------------------|---------------|
| 857-50189   | CABLELOK-T10-01 | 15.5 - 22.0                  | 1             |
| 857-50190   | CABLELOK-T10-10 | 15.5 - 22.0                  | 10            |
| 857-50181   | CABLELOK-T20-01 | 20.0 - 23.5                  | 1             |
| 857-50182   | CABLELOK-T20-10 | 20.0 - 23.5                  | 10            |
| 857-50183   | CABLELOK-T30-01 | 23.5 - 25.5                  | 1             |
| 857-50184   | CABLELOK-T30-10 | 23.5 - 25.5                  | 10            |
| 857-50185   | CABLELOK-T40-01 | 24.5 - 29.0                  | 1             |
| 857-50186   | CABLELOK-T40-10 | 24.5 - 29.0                  | 10            |
| 857-50187   | CABLELOK-T99-01 | Port Plug                    | 1             |
| 857-50188   | CABLELOK-T99-10 | Port Plug                    | 10            |

All dimensions in mm. Subject to technical changes.



## LM Port Cablelok

### Features and Benefits

- Cable range coverage from 4.0mm to 15.0mm
- Dual outlet for loop through applications
- Port closure plug available
- Supplied in multiples of 1 and 10
- Supplied with installation lubricant sachets



LM Series Cablelok

### Technical Description

The LM Port Cablelok is a mechanical seal manufactured from Polychloroprene rubber, reinforced Nylon and Acetal. There are 5 Cableloks which cover a cable range of 4.8mm – 15.0mm four of which have a dual outlet for loop through applications, the fifth being a port plug for blocking unused LM sized cable entry ports.

### Technical Data Table

| Article-No. | Type              | Suitable for Cable Ø from/to | Pack Quantity |
|-------------|-------------------|------------------------------|---------------|
| 857-50203   | CABLELOK-LM10C-01 | 2 x 4.0 - 6.5                | 1             |
| 857-50204   | CABLELOK-LM10C-10 | 2 x 4.0 - 6.5                | 10            |
| 857-50205   | CABLELOK-LM20C-01 | 2 x 6.0 - 9.5                | 1             |
| 857-50206   | CABLELOK-LM20C-10 | 2 x 6.0 - 9.5                | 10            |
| 857-50207   | CABLELOK-LM30C-01 | 2 x 9.0 - 12.5               | 1             |
| 857-50208   | CABLELOK-LM30C-10 | 2 x 9.0 - 12.5               | 10            |
| 857-50209   | CABLELOK-LM40C-01 | 2 x 12.5 - 15.0              | 1             |
| 857-50210   | CABLELOK-LM40C-10 | 2 x 12.5 - 15.0              | 10            |
| 857-50211   | CABLELOK-LM99C-01 | Port Plug                    | 1             |
| 857-50212   | CABLELOK-LM99C-10 | Port Plug                    | 10            |

All dimensions in mm. Subject to technical changes.





## L Port Cablelok

### Features and Benefits

- Cable range coverage from 5.5mm to 20.0mm
- Dual outlet for loop through applications
- Port closure plug available
- Supplied in multiples of 1 and 10
- Supplied with installation lubricant sachets



L Series Cablelok

### Technical Description

The L Port Cablelok is a mechanical seal manufactured from Polychloroprene rubber, reinforced Nylon and Acetal. There are 6 Cableloks which cover a cable range of 5.5mm – 20.0mm five of which have a dual outlet for loop through applications, the sixth being a port plug for blocking unused L sized cable entry ports.

### Technical Data Table

| Article-No. | Type             | Suitable for Cable Ø from/to | Pack Quantity |
|-------------|------------------|------------------------------|---------------|
| 857-50199   | CABLELOK-L10C-01 | 2 x 5.5 - 9.5                | 1             |
| 857-50200   | CABLELOK-L10C-10 | 2 x 5.5 - 9.5                | 10            |
| 857-50213   | CABLELOK-L20C-01 | 2 x 12.5 - 9.0               | 1             |
| 857-50214   | CABLELOK-L20C-10 | 2 x 12.5 - 9.0               | 10            |
| 857-50191   | CABLELOK-L30C-01 | 2 x 12.0 - 15.0              | 1             |
| 857-50192   | CABLELOK-L30C-10 | 2 x 12.0 - 15.0              | 10            |
| 857-50193   | CABLELOK-L40C-01 | 2 x 15.0 - 18.5              | 1             |
| 857-50194   | CABLELOK-L40C-10 | 2 x 15.0 - 18.5              | 10            |
| 857-50195   | CABLELOK-L50C-01 | 2 x 18.3 - 20.0              | 1             |
| 857-50196   | CABLELOK-L50C-10 | 2 x 18.3 - 20.0              | 10            |
| 857-50197   | CABLELOK-L99C-01 | Port Plug                    | 1             |
| 857-50198   | CABLELOK-L99C-10 | Port Plug                    | 10            |

All dimensions in mm. Subject to technical changes.



## Port Opening Tools

### Features and Benefits

- Quick and effective method for opening closed entry ports
- Easy to use
- Consistent smooth cut reducing the risk of damage to cable entry ports
- All port tools available in a single kit or individually
- Ideal for Cablelok installations



Port Opening Tool Kit

### Technical Description

HellermannTyton's port opening tools are available in two styles. The 'Top Hat' style is suitable for use with the 4 port FST, FRBU, MRBU, RBU and LRBUs closures. The 'Inset Disc' style is used with the 13 port FST, FDN, FML and UFC closures.

### Technical Data Table

| Article-No. | Type     | Description           | Port     | Kit Content   | Pack Cont. |
|-------------|----------|-----------------------|----------|---|------------|
| 857-40173   | TPC1939  | Top Hat               | R        | -   | 1          |
| 857-40174   | TPC1940  | Top Hat               | B        | -   | 1          |
| 857-40175   | TPC1941  | Inset Disc            | R        | -   | 1          |
| 857-40176   | TPC1942  | Inset Disc            | B        | -   | 1          |
| 857-40177   | TPC1943  | Inset Disc            | S        | -   | 1          |
| 857-40179   | TPC3337  | Coping Saw            | L, LM, T | -   | 1          |
| 857-40221   | TPCK3924 | Port Opening Tool Kit | -        | TPC1939<br>TPC1940<br>TPC1941<br>TPC1942<br>TPC1943<br>Cover Release Tool | 1          |

All dimensions in mm. Subject to technical changes.