



11.0 Cablelok

11.1 Cablelok

R Port Series	152
B Port Series	153
S Port Series	154
S Port Multi-Drop Cablelok	155
T Port Series	156
LM Port Series	157
L Port Series	158
Port Opening Tools	159

11.1 Cablelok

Introduction

Cablelok 100% Mechanical Seal

Fibre engineers and network owners are increasingly insisting on 100% mechanically sealed closures.

Traditional heatshrink methods for cable sealing are time consuming; dependent on the skill of the engineer; and the access required around the port means heatshrink is not conducive to high port densities, particularly applicable in today's FTTX environment. There are also health and safety concerns relating to gas bottle storage/transportation and confined space use.

HellermannTyton's patented Cablelok mechanical seal enables fast safe cable installation, providing a highly repeatable and consistent seal between the cable and the closure port with excellent non-leak performance.

Tested to in excess of 6m head of water, the Cablelok does not rely on the skill and experience of the engineer to achieve the required seal, whilst installation times are typically reduced by up to 90%.

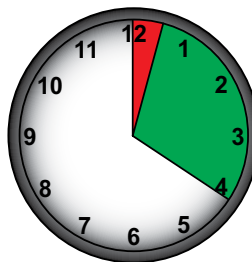
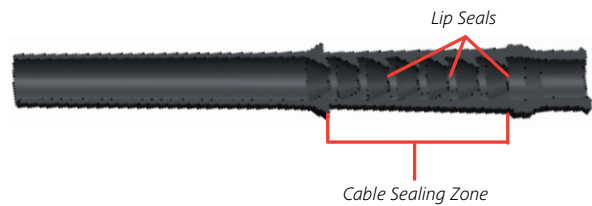
How does Cablelok work?

Cablelok is manufactured from an external grade of flexible polychloroprene. Sealing is achieved by multiple internal lip seals which are compressed onto the cable during installation.



Features and Benefits

- Excellent sealing properties to in excess of 6m head of water (58.8kPa)
- Rapid installation with no specialist tools required
- Highly repeatable – the quality of the seal is not dependent on the skill of the engineer
- Eliminates the need for potentially hazardous gas bottle transportation and storage
- Ideal for use in hazardous or restricted areas as no heat or gas is required for installation
- Dual outlet versions for loop through applications
- Multi-hole versions are available allowing up to five cable drops from the same port
- Proven technology in the field



- Cablelok™ - 2 mins
- Heatshrink - 20 mins



Selecting the Correct Cablelok

Each port size on the HellermannTyton closures has a unique identifier and a dedicated series of Cableloks (ie: R, B, S, T, LM or L). Every Cablelok within a series is specifically designed to accommodate a range of cable diameters. Achieving the required seal performance is simply a case of selecting the correct Cablelok for the port and cable combination being used.

- STEP 1** Determine the diameter of the cable being used.
- STEP 2** Choose the appropriate closure port to be used and hence port identifier.
- STEP 3** Identify the correct Cablelok using the port and cable ranges shown below.

Round Ports

R Port

Cable Ø Range (mm)	Part Number	Pack Quantity	UNS No.
1.7 - 2.0	CABLELOK-R10-01 CABLELOK-R10-10	1 10	857-50163 857-50164
2 x 1.7 - 2.0 (2 Cables)	CABLELOK-R10D-01 CABLELOK-R10D-10	1 10	857-50161 857-50162
2.0 - 3.0	CABLELOK-R15-01 CABLELOK-R15-10	1 10	857-50224 857-50225
2 x 2.0 - 3.0 (2 Cables)	CABLELOK-R15D-01 CABLELOK-R15D-10	1 10	857-50226 857-50227
3.0 - 3.8	CABLELOK-R20-01 CABLELOK-R20-10	1 10	857-50165 857-50166
2 x 3.8 - 4.8 (2 Cables)	CABLELOK-R30D-01 CABLELOK-R30D-10	1 10	857-50159 857-50160
3.8 - 5.2	CABLELOK-R40-01 CABLELOK-R40-10	1 10	857-50151 857-50152
5.2 - 8.0	CABLELOK-R50-01 CABLELOK-R50-10	1 10	857-50153 857-50154
6.0 - 8.5	CABLELOK-R70-01 CABLELOK-R70-10	1 10	857-50167 857-50168
8.0 - 9.5	CABLELOK-R80-01 CABLELOK-R80-10	1 10	857-50155 857-50156
Port Closure Plug	CABLELOK-R99-01 CABLELOK-R99-10	1 10	857-50157 857-50158

B Port

Cable Ø Range (mm)	Part Number	Pack Quantity	UNS No.
4.8 - 9.0	CABLELOK-B10-01 CABLELOK-B10-10	1 10	857-50149 857-50150
8.0 - 14.0	CABLELOK-B20-01 CABLELOK-B20-10	1 10	857-50143 857-50144
13.0 - 16.5	CABLELOK-B30-01 CABLELOK-B30-10	1 10	857-50145 857-50146
Port Closure Plug	CABLELOK-B99-01 CABLELOK-B99-10	1 10	857-50147 857-50148

S Port

Cable Ø Range (mm)	Part Number	Pack Quantity	UNS No.
5.0 - 8.5	CABLELOK-S10-01 CABLELOK-S10-10	1 10	857-50179 857-50180
6.8 - 7.2 (5 Cables)	CABLELOK-S15M5-01 CABLELOK-S15M5-10	1 10	857-50228 857-50229
8.0 - 12.0	CABLELOK-S20-01 CABLELOK-S20-10	1 10	857-50169 857-50170
2 x 10.0 - 11.5 (2 Cables)	CABLELOK-S30D-01 CABLELOK-S30D-10	1 10	857-50177 857-50178
12.0 - 16.0	CABLELOK-S40-01 CABLELOK-S40-10	1 10	857-50171 857-50172
16.0 - 20.0	CABLELOK-S50-01 CABLELOK-S50-10	1 10	857-50173 857-50174
Port Closure Plug	CABLELOK-S99-01 CABLELOK-S99-10	1 10	857-50175 857-50176

T Port

Cable Ø Range (mm)	Part Number	Pack Quantity	UNS No.
15.5 - 22.0	CABLELOK-T10-01 CABLELOK-T10-10	1 10	857-50189 857-50190
20 - 23.5	CABLELOK-T20-01 CABLELOK-T20-10	1 10	857-50181 857-50182
23.5 - 25.5	CABLELOK-T30-01 CABLELOK-T30-10	1 10	857-50183 857-50184
24.5 - 29.0	CABLELOK-T40-01 CABLELOK-T40-10	1 10	857-50185 857-50186
Port Closure Plug	CABLELOK-T99-01 CABLELOK-T99-10	1 10	857-50187 857-50188

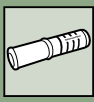
Oval Ports

L Port

Cable Ø	Range (mm)	Part Number	Pack Quantity	UNS No.
2 x 5.5 - 9.5		CABLELOK-L10C-01 CABLELOK-L10C-10	1 10	857-50199 857-50200
2 x 9.0 - 12.5		CABLELOK-L20C-01 CABLELOK-L20C-10	1 10	857-50213 857-50214
2 x 12.0 - 15.0		CABLELOK-L30C-01 CABLELOK-L30C-10	1 10	857-50191 857-50192
2 x 15.0 - 18.5		CABLELOK-L40C-01 CABLELOK-L40C-10	1 10	857-50193 857-50194
2 x 18.3 - 20.0		CABLELOK-L50C-01 CABLELOK-L50C-10	1 10	857-50195 857-50196
Port Closure Plug		CABLELOK-L99C-01 CABLELOK-L99C-10	1 10	857-50197 857-50198

LM Port

Cable Ø	Range (mm)	Part Number	Pack Quantity	UNS No.
2 x 4.0 - 6.5		CABLELOK-LM10C-01 CABLELOK-LM10C-10	1 10	857-50203 857-50204
2 x 6.0 - 9.5		CABLELOK-LM20C-01 CABLELOK-LM20C-10	1 10	857-50205 857-50206
2 x 9.0 - 12.5		CABLELOK-LM30C-01 CABLELOK-LM30C-10	1 10	857-50207 857-50208
2 x 12.5 - 15.0		CABLELOK-LM40C-01 CABLELOK-LM40C-10	1 10	857-50209 857-50210
Port Closure Plug		CABLELOK-LM99C-01 CABLELOK-LM99C-10	1 10	857-50211 857-50212



Cablelok

R Port Series

Features and Benefits

- Cable range coverage from 1.7mm to 9.5mm
- Multi-hole versions available to allow 2 cable drops from the same port
- Multi-hole cable range coverage from 1.7mm – 2.0mm (R10D), 2.0mm - 3.0mm (R15D) and 3.8mm – 4.8mm (R30D)
- Port closure plug available
- Supplied in multiples of 1 and 10
- Supplied with installation lubricant sachets



R Series Cablelok

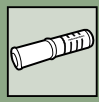
Technical Description

The R Port Cablelok is a mechanical seal manufactured from external grade flexible polychloroprene. There are 11 Cablelok's which cover a cable range of 1.7mm – 9.5mm including three multi-hole versions to

allow two cable drops from the same port and a port plug for blocking unused R sized drop ports.

TYPE	Suitable for Cable Ø from/to	Pack Content	Article-No.
CABLELOK-R99-01	-	1	857-50157
CABLELOK-R99-10	-	10	857-50158
CABLELOK-R10-01	1.7 - 2.0	1	857-50163
CABLELOK-R10-10	1.7 - 2.0	10	857-50164
CABLELOK-R10D-01	1.7 - 2.0	1	857-50161
CABLELOK-R10D-10	1.7 - 2.0	10	857-50162
CABLELOK-R15-01	2.0 - 3.0	1	857-50224
CABLELOK-R15-10	2.0 - 3.0	10	857-50225
CABLELOK-R15D-01	2.0 - 3.0	1	857-50226
CABLELOK-R15D-10	2.0 - 3.0	10	857-50227
CABLELOK-R20-01	3.0 - 3.8	1	857-50165
CABLELOK-R20-10	3.0 - 3.8	10	857-50166
CABLELOK-R30D-01	3.8 - 4.8	1	857-50159
CABLELOK-R30D-10	3.8 - 4.8	10	857-50160
CABLELOK-R40-01	3.8 - 5.2	1	857-50151
CABLELOK-R40-10	3.8 - 5.2	10	857-50152
CABLELOK-R50-01	5.2 - 8.0	1	857-50153
CABLELOK-R50-10	5.2 - 8.0	10	857-50154
CABLELOK-R70-01	6.0 - 8.5	1	857-50167
CABLELOK-R70-10	6.0 - 8.5	10	857-50168
CABLELOK-R80-01	8.0 - 9.5	1	857-50155
CABLELOK-R80-10	8.0 - 9.5	10	857-50156

All dimensions in mm. Subject to technical changes.



Cablelok

B Port Series

Features and Benefits

- Cable range coverage from 4.8mm to 16.5mm
- Port closure plug available
- Supplied in multiples of 1 and 10
- Supplied with installation lubricant sachets



B Series Cablelok

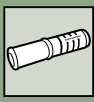
Technical Description

The B Port Cablelok is a mechanical seal manufactured from external grade flexible polychloroprene. There are 4 Cablelok's which cover a

cable range of 4.8mm – 16.5mm including a port plug for blocking unused B sized drop ports.

TYPE	Suitable for Cable Ø from/to	Pack Content	Article-No.
CABLELOK-B99-01	-	1	857-50147
CABLELOK-B99-10	-	10	857-50148
CABLELOK-B10-01	4.8 - 9.0	1	857-50149
CABLELOK-B10-10	4.8 - 9.0	10	857-50150
CABLELOK-B20-01	8.0 - 14.0	1	857-50143
CABLELOK-B20-10	8.0 - 14.0	10	857-50144
CABLELOK-B30-01	13.0 - 16.5	1	857-50145
CABLELOK-B30-10	13.0 - 16.5	10	857-50146

All dimensions in mm. Subject to technical changes.



Cablelok

S Port Series

Features and Benefits

- Cable range coverage from 5.0mm to 20.0mm
- Multi-hole version available to allow 2 cable drops from the same port
- Multi-hole cable range coverage from 10.0mm – 11.5mm
- Port closure plug available
- Supplied in multiples of 1 and 10
- Supplied with installation lubricant sachets



S Series Cablelok

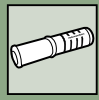
Technical Description

The S Port Cablelok is a mechanical seal manufactured from external grade flexible polychloroprene. There are 6 Cablelok's which cover a cable range of 5.0mm – 20.0mm including one multi-hole version to

allow two cable drops from the same port and a port plug for blocking unused S sized drop ports.

TYPE	Suitable for Cable Ø from/to	Pack Content	Article-No.
CABLELOK-S99-01	-	1	857-50175
CABLELOK-S99-10	-	10	857-50176
CABLELOK-S10-01	5.0 - 8.5	1	857-50179
CABLELOK-S10-10	5.0 - 8.5	10	857-50180
CABLELOK-S20-01	8.0 - 12.0	1	857-50169
CABLELOK-S20-10	8.0 - 12.0	10	857-50170
CABLELOK-S30D-01	10.0 - 11.5	1	857-50177
CABLELOK-S30D-10	10.0 - 11.5	10	857-50178
CABLELOK-S40-01	12.0 - 16.0	1	857-50171
CABLELOK-S40-10	12.0 - 16.0	10	857-50172
CABLELOK-S50-01	16.0 - 20.0	1	857-50173
CABLELOK-S50-10	16.0 - 20.0	10	857-50174

All dimensions in mm. Subject to technical changes.



Cablelok

S Port Multi-Drop Cablelok

Features and Benefits

- Cable range 6.8mm to 7.2mm
- Allows 5 cables drops from a single S Port
- Supplied in multiples of 1 and 10
- Supplied with installation lubricant sachets



S Port Multi-Drop Cablelok

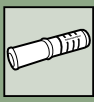
Technical Description

The S Port Multi-Drop Cablelok is a mechanical seal manufactured from Polychloroprene. This cablelok fits in to a single S Port on the

HellermannTyton closures converting it from a single cable drop port to a 5 cable drop port for cables with a diameter range of 6.8mm - 7.2mm

TYPE	Suitable for Cable Ø from/to	Pack Content	Article-No.
CABLELOK-S15M5-01	6.8 - 7.2	1	857-50228
CABLELOK-S15M5-10	6.8 - 7.2	10	857-50229

All dimensions in mm. Subject to technical changes.



Cablelok

T Port Series

Features and Benefits

- Cable range coverage from 15.5mm to 29.0mm
- Port closure plug available
- Supplied in multiples of 1 and 10
- Supplied with installation lubricant sachets



T Series Cablelok

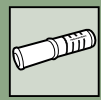
Technical Description

The T Port Cablelok is a mechanical seal manufactured from external grade flexible polychloroprene. There are 5 Cablelok's which cover a

cable range of 15.5mm – 29.0mm including a port plug for blocking unused T sized drop ports.

TYPE	Suitable for Cable Ø from/to	Pack Content	Article-No.
CABLELOK-T99-01	-	1	857-50187
CABLELOK-T99-10	-	10	857-50188
CABLELOK-T10-01	15.5 - 22.0	1	857-50189
CABLELOK-T10-10	15.5 - 22.0	10	857-50190
CABLELOK-T20-01	20.0 - 23.5	1	857-50181
CABLELOK-T20-10	20.0 - 23.5	10	857-50182
CABLELOK-T30-01	23.5 - 25.5	1	857-50183
CABLELOK-T30-10	23.5 - 25.5	10	857-50184
CABLELOK-T40-01	24.5 - 29.0	1	857-50185
CABLELOK-T40-10	24.5 - 29.0	10	857-50186

All dimensions in mm. Subject to technical changes.



Cablelok

LM Port Series

Features and Benefits

- Cable range coverage from 4.0mm to 15.0mm
- Dual outlet for loop through applications
- Port closure plug available
- Supplied in multiples of 1 and 10
- Supplied with installation lubricant sachets.



LM Series Cablelok

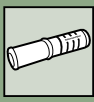
Technical Description

The LM Port Cablelok is a mechanical seal manufactured from Neoprene rubber, Minlon and Acetal. There are 5 Cablelok's which cover a cable range of 4.8mm – 15.0mm four of which have a dual outlet for loop

through applications, the fifth being a port plug for blocking unused LM sized drop ports.

TYPE	Suitable for Cable Ø from/to	Pack Content	Article-No.
CABLELOK-LM99C-01	-	1	857-50211
CABLELOK-LM99C-10	-	10	857-50212
CABLELOK-LM10C-01	4.0 - 6.5	1	857-50203
CABLELOK-LM10C-10	4.0 - 6.5	10	857-50204
CABLELOK-LM20C-01	6.0 - 9.5	1	857-50205
CABLELOK-LM20C-10	6.0 - 9.5	10	857-50206
CABLELOK-LM30C-01	9.0 - 12.5	1	857-50207
CABLELOK-LM30C-10	9.0 - 12.5	10	857-50208
CABLELOK-LM40C-01	12.5 - 15.0	1	857-50209
CABLELOK-LM40C-10	12.5 - 15.0	10	857-50210

All dimensions in mm. Subject to technical changes.



Cablelok

L Port Series

Features and Benefits

- Cable range coverage from 5.5mm to 20.0mm
- Dual outlet for loop through applications
- Port closure plug available
- Supplied in multiples of 1 and 10
- Supplied with installation lubricant sachets



L Series Cablelok

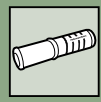
Technical Description

The L Port Cablelok is a mechanical seal manufactured from Neoprene rubber, Minlon and Acetal. There are 6 Cablelok's which cover a cable range of 5.5mm – 20.0mm five of which have a dual outlet for loop

through applications, the sixth being a port plug for blocking unused L sized drop ports.

TYPE	Suitable for Cable Ø from/to	Pack Content	Article-No.
CABLELOK-L99C-01	-	1	857-50197
CABLELOK-L99C-10	-	10	857-50198
CABLELOK-L10C-01	5.5 - 9.5	1	857-50199
CABLELOK-L10C-10	5.5 - 9.5	10	857-50200
CABLELOK-L20C-01	9.0 - 12.5	1	857-50213
CABLELOK-L20C-10	9.0 - 12.5	10	857-50214
CABLELOK-L30C-01	12.0 - 15.0	1	857-50191
CABLELOK-L30C-10	12.0 - 15.0	10	857-50192
CABLELOK-L40C-01	15.0 - 18.5	1	857-50193
CABLELOK-L40C-10	15.0 - 18.5	10	857-50194
CABLELOK-L50C-01	18.3 - 20.0	1	857-50195
CABLELOK-L50C-10	18.3 - 20.0	10	857-50196

All dimensions in mm. Subject to technical changes.



Cablelok

Port Opening Tools

Features and Benefits

- Quick and effective method for opening cable entry ports
- Easy to use
- Consistent smooth cut reducing the risk of damage to cables
- All port tools available in a single kit or individually
- Ideal for Cablelok installations



Port Opening Tools

Technical Description

HellermannTyton's port opening tools are available in two styles. The 'Top Hat' style is suitable for use with the 4 port FST, FRBU, FDN 16 Port,

MRBU, RBU and LRBUs closures. The 'Inset Disc' style is used with the 13 port FST, FDN, FML and UFC closures.

TYPE	Description	Port	Content	Pack Content	Article-No.
TPC3337	Coping Saw	L, LM, T	-	1	857-40179
TPC1942	Inset Disc	B	-	1	857-40176
TPC1941	Inset Disc	R	-	1	857-40175
TPC1943	Inset Disc	S	-	1	857-40177
TPC1940	Top Hat	B	-	1	857-40174
TPC1939	Top Hat	R	-	1	857-40173
TPC1944	Top Hat	S	-	1	857-40367
TPCK3924	Port Opening Tool Kit	-	TPC1939 TPC1940 TPC1941 TPC1942 TPC1943 Cover Release Tool	1	857-40221

All dimensions in mm. Subject to technical changes.

Solutions Designed for You



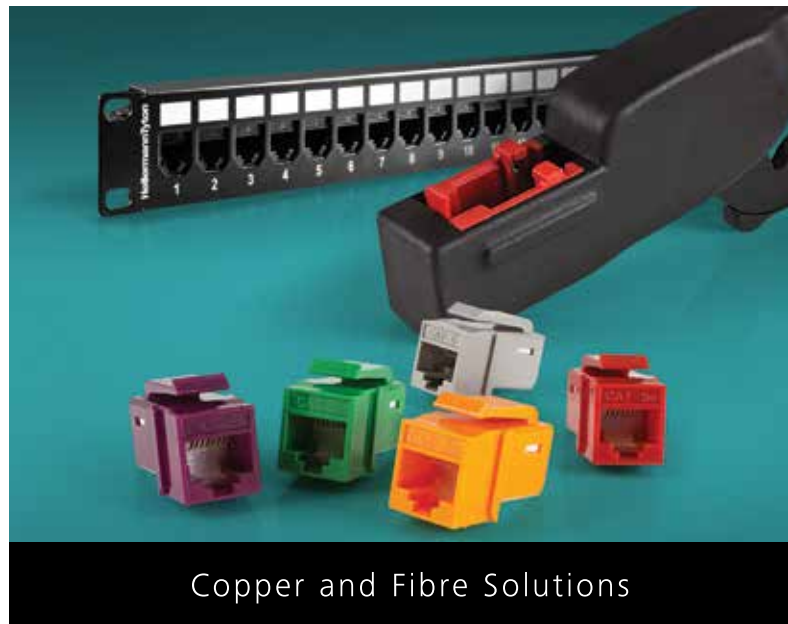
LAN Connectivity



LightGuide 2 - Fibre Ducting System



RapidNet - Pre-terminated System



Copper and Fibre Solutions

HellermannTyton offers a complete range of connectivity solutions to suit your network requirements.

For a network solution offering the highest quality and performance choose:

HellermannTyton

For more information, visit us online at...

htdata.co.uk

Stay in touch with us!

